



Soportes y Rodamientos
Housing and Bearings



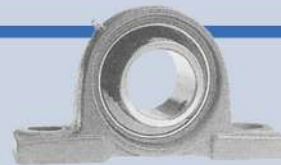
Soporte Tipo Puente

Pillow Blocks

UCP200 Series

UCP300 Series

UCPE200 Series

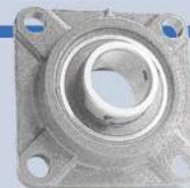


Soporte Brida Cuadrada

Square Flange Unit

UCF200 Series

UCF300 Series



Soporte Brida Ovalada

Oval Flange Unit

UCFL200 Series

UCFL300 Series



Soportes Tensores

Take-up Unit

UCT200 Series

UCT300 Series



Soporte de cartucho de brida redonda / Soporte de cartucho cilíndrico

Round Flange Cartridge Unit / Cylindrical Cartridge Unit

UCFC200 Series

UCC200 Series



Soporte de Pie

Pillow Blocks

UCPH200 Series

UCPA200 Series

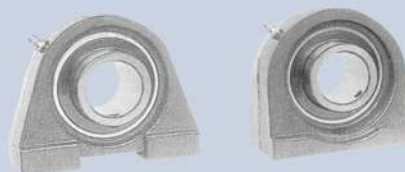


Soporte de Pie con Base Roscada

Tapped-base Pillow Blocks

UCPW200 Series

UCPG200 Series

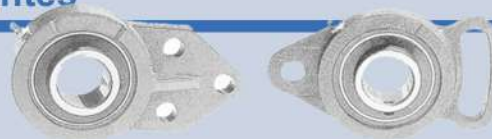


Soportes de Brida/ Soporte de Brida Autoalineantes

Flange Bracket Unit/ Adjustable Flange Unit

UCFB200 Series

UCFA200 Series



Soporte de Brida Ovalada de servicio liviano

Light-duty Oval Flange Unit

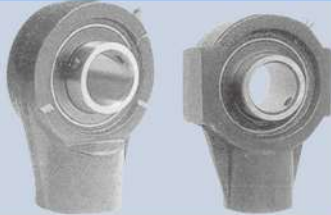
SBLF200 Series
SALF200 Series
SBLW200 Series
SBFD200 Series



Soportes Colgantes

Hanger Unit

UCHA200 Series
UCHE200 Series



Soporte de Acero Prensado

Pressed Steel Housing

PF200 Series
PFT200 Series
PFT200 Series



Rodamiento Inserto de Bolas

Insert Ball Bearing

UC300 Series
NA200 Series
SA200-CSA200 Series
SB200-CSB200 Series
UD200 Series
UK200+H2300 Series
SER200 Series



UC300 Series



NA200 Series



SB200-CSB200 Series

UD200 Series



UK200+H2300 Series

SER200 Series

Soporte Tipo Puente de Aleación de Zinc

Zinc Alloy Pillow Blocks

UP000 Series
UFL000 Series
KP000 Series
KPL000 Series



Carcasa de Bloque de Plomada

Plummer Blocks

SN500 Series
SN600 Series
SNU500 Series
SNU600 Series



SN500 Series
SN600 Series



SNU500 Series
SNU600 Series

Rodamiento de Bolas

Insert Ball Bearing

UC200 Series



Manguitos de fijación

Adapter Sleeves

H200 Series





Tabla de Equivalencias para Soportes con Rodamientos Autoalineables

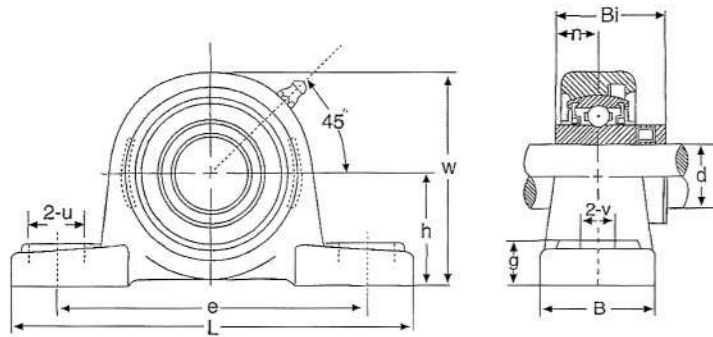
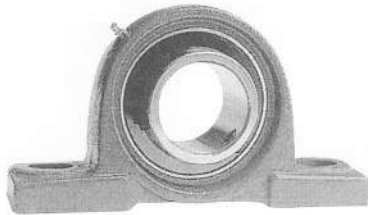
Table of Equivalences for Supports with Self-aligning Bearings

CARCASAS			RODAMIENTOS DE INSERCIÓN							
DISEÑO SOPORTE	SKF	POPULAR	SKF	POPULAR	SKF	POPULAR	SKF	POPULAR	SKF	POPULAR
		INA	YAR	UC INA GYE-KRRB	YET	SA INA GRAE...NPPB	YAT	SB INA GAY-NPPB	YEL	NA INA GE...KRRB
	SY	P ASE	SY-TF	UCP RASEY	SY-FM	SAP PASE	SY-RM	SBP PASEY	SY-WF	NAP RASE
	FY	F CF/CJ	FY-TF	UCF RCJY	FY-FM	SAF PCF/PCJ	FY-RM	SBF PCJY	FY-WF	* RCJ
	FYC	FC FE/ME	FYC-TF	UCFC RMEY	FYC-FM	SAFC PME	FYC-RM	SBFC PMEY	FYC-WF	RFE RME
	FYTB	FL CFT/CJT	FYTB-TF	UCFL RCJTY	FYTB-FM	SAFL PCFT/PCJT	FYTB-RM	SBFL PCJTY	FYTB-WF	* RCJT
	SYF	PA SHE	SYF-TF	UCPA RSHEY	SYF-FM	SAPA PSHE	SYF-RM	SBPA PSHEY	SYF-WF	* RSHE
	TU	T TUE	TU-TF	UCT RTUEY	TU-FM	SAT PTUE	TU-RM	SBT PTUEY	TU-WF	* RTUE
	FYTF	LF LCTE	FYTF-TF	RTUEY	FYTF-FM	SALF FLCTE	FYTF-RM	SBLF FLCTEY	FYTF-WF	* *
	*	PH	*	UCPH	*	SAPH	*	SBPH	*	*
	HE	ECH	*	UCECH	PHE	SAECH	PHEY	SBECH	RHE	*
	FB	FB	UCFB-TF	UCFB	*	SAFB	*	SBFB	*	*
	SFT	FA	*	UCFA	PSFT	SAFA	*	SBFA	*	*
	*	C	*	UCC	*	SAC	*	SBC		
CHAPA DE ACERO		P		PF		PFT		PFD	 RODAMIENTOS DE INSERCIÓN	



Soporte Tipo Puente

Pillow Blocks

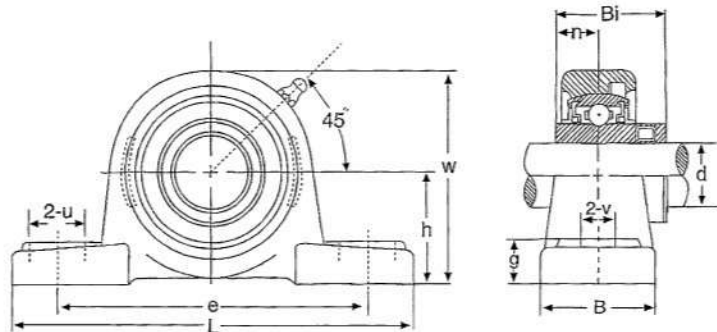
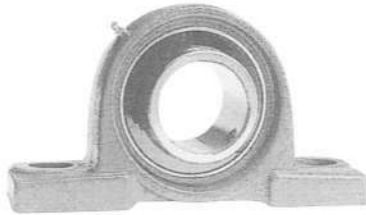


UCP200 Series

Tipo Type	Eje-Shaft d		Dimensiones Dimensions (mm)										Tamaño Perno Bolt Size mm	Peso Weight kg
	(in.)	(mm)	h	L	e	B	v	u	g	w	Bi	n		
UCWP201 201-8	1/2	12	30.2	124	94	32	13	19	14	57	27.4	11.5	M10	0.66
UCWP202 202-10	5/8	15	30.2	124	94	32	13	19	14	57	27.4	11.5	M10	0.66
UCWP203 203-11	11/16	17	30.2	124	94	32	13	19	14	57	27.4	11.5	M10	0.66
UCP204-12 204	3/4	20	33.3	127	94	37	13	19	14	64	31	12.7	M10	0.7
UCP205-14 205-15 205 205-16	7/8 15/16 1	25	36.5	140	105	38	13	19	15	69.5	34	14.3	M10	0.76
UCP206-18 206 206-19 206-20	1-1/8 1-3/16 1-1/4	30	42.9	159	121	43	17	21	17	83	38.1	15.9	M12	1.25
UCP207-20 207-21 207-22 207 207-23	1-1/4 1-5/16 1-3/8 1-7/16	35	47.6	167	127	45	17	21	18	92	42.9	17.5	M12	1.55
UCP208-24 208-25 208	1-1/2 1-9/16	40	49.2	181	136	50	17	21	18	98	49.2	19	M12	1.9
UCP209-26 209-27 209-28 209	1-5/8 1-11/16 1-3/4	45	54	190	146	52	17	21	20	106	49.2	19	M12	2.2
UCP210-30 210-31 210	1-7/8 1-15/16	50	57.2	203	159	59	20	25	20	112	51.6	19	M16	2.75
UCP211-32 211-34 211 211-35	2 2-1/8 2-3/16	55	63.5	218	171	57	20	25	23	124	55.6	22.2	M16	3.3
UCP212-36 212 212-38 212-39	2-1/4 2-3/8 2-7/16	60	69.8	239	184	69	20	24	26	137	65.1	25.4	M16	4.7
UCP213-40 213	2-1/2	65	76.2	264	202	68	25	30	27	147	65.1	25.4	M20	5.6
UCP214-44 214	2-3/4	70	79.4	266	208	69	25	31	28	155	74.6	30.2	M20	6.6
UCP215 215-48	3	75	82.6	274	217	73	25	29	28	162	77.8	33.3	M20	7.3
UCP216		80	88.9	290	231	76	25	30	32	174	82.6	33.3	M20	9
UCP217-52 217	3-1/4	85	95.2	312	247	83	25	28	34	187	85.7	34.1	M20	10.8
UCP218-56 218	3-1/2	90	101.6	326	262	87	27	32	35	198	96	39.7	M22	13



Soporte Tipo Puente Pillow Blocks

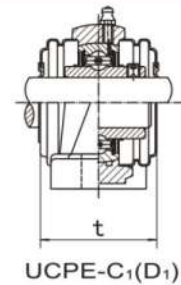
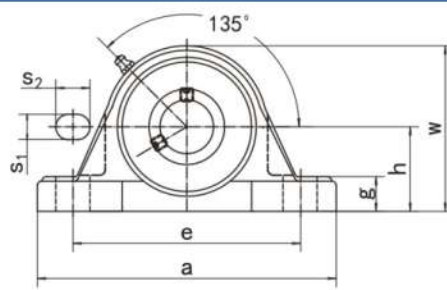
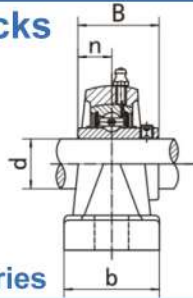


UCP300 Series

Tipo Type	Eje-Shaft d		Dimensiones Dimensions (mm)										Tamaño Perno Bolt Size mm	Peso Weight kg
	(in.)	(mm)	h	L	e	B	v	u	g	w	Bi	n		
UCP305-14 305-15 305 305-16	7/8 15/16 1	25	45	175	132	45	17	21	16	83	38	15	M14	1.4
UCP306-18 306 306-19	1-1/8 1-3/16	30	50	180	140	50	17	21	19	95	43	17	M14	1.8
UCP307-20 307-21 307-22 307	1-1/4 1-5/16 1-3/8	35	56	211	160	56	17	25	21	106	48	19	M14	2.8
UCP308-24 308-25 308	1-1/2 1-9/16	40	60	220	168	60	17	27	24	114	52	19	M14	3.08
UCP309-26 309-27 309-28 309	1-5/8 1-11/16 1-3/4	45	67	245	191	67	20	30	25	127	57	22	M16	4.10
UCP310-30 310-31 310	1-7/8 1-15/16	50	75	278	215	75	21	35	29	143	61	22	M16	6.0
UCP311-32 311-34 311 311-35	2 2-1/8 2-3/16	55	80	310	236	80	21	38	30	153	66	25	M16	7.4
UCP312-36 312 312-38 312-39	2-1/4 2-3/8 2-7/16	60	85	332	256	85	25	38	32	165	71	26	M20	9.4
UCP313-40 313	2-1/2	65	90	341	260	90	25	38	35	176	75	30	M20	10.0
UCP314-44 314	2-3/4	70	95	362	280	90	27	40	35	187	78	33	M22	12.0
UCP315 315-48	3	75	100	382	290	100	27	40	35	198	82	32	M22	14.0
UCP316		80	106	402	302	110	28	40	41	211	86	34	M22	18.0
UCP317-52 317	3-1/4	85	112	422	321	110	33	45	40	220	96	40	M27	20.0
UCP318-56 318	3-1/2	90	118	430	330	110	33	45	45	235	96	40	M27	24.0
UCP319 319-60	3-3/4	95	125	470	360	120	36	45	45	250	103	41	M30	
UCP320 320-64	4	100	140	492	380	120	36	50	50	275	108	42	M30	
UCP321		105	140	489	380	120	36	50	50	279	112	44	M30	
UCP322		110	150	520	400	140	40	55	55	300	117	46	M33	
UCP324		120	160	570	450	140	40	55	65	320	126	51	M33	
UCP326		130	180	600	480	140	40	55	75	355	135	54	M33	
UCP328		140	200	620	500	140	40	55	75	390	145	59	M33	

SopORTE Tipo Puente

Pillow Blocks



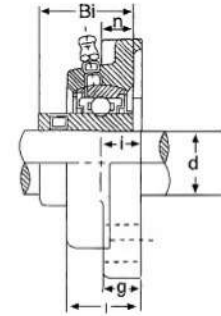
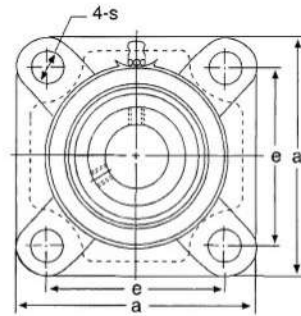
UCPE-C₁(D₁)

UCPE200 Series

Tipo Type	Dimensiones - Dimensions (mm/in)												Tamaño Perno Bolt Size mm/in	Rodamiento Bearing No	SopORTE Housing No	Peso Weight (kg)
	d	h	a	e	b	s ₁	s ₂	g	w	t	B	n				
UCPE201 201-8	12 1/2	33.3 1-5/16	127 5	95 3-3/4	38 1-1/2	13 1/2	19 3/4	14 9/16	65 2-9/16	44.5 1-3/4	31 1.2205	12.7 0.500	M10 3/8	UC201 UC201-8	PE201	0.78 0.78
UCPE202 202-9 202-10	15 9/16 5/8	33.3 1-5/16	127 5	95 3-3/4	38 1-1/2	13 1/2	19 3/4	14 9/16	65 2-9/16	44.5 1-3/4	31 1.2205	12.7 0.500	M10 3/8	UC202 UC202-9 UC202-10	PE202	0.77 0.77 0.77
UCPE203 203-11	17 11/16	33.3 1-5/16	127 5	95 3-3/4	38 1-1/2	13 1/2	19 3/4	14 9/16	65 2-9/16	44.5 1-3/4	31 1.2205	12.7 0.500	M10 3/8	UC203 UC203-11	PE203	0.76 0.75
UCPE204 204-12	20 3/4	33.3 1-5/16	127 5	95 3-3/4	38 1-1/2	13 1/2	19 3/4	14 9/16	65 2-9/16	44.5 1-3/4	31 1.2205	12.7 0.500	M10 3/8	UC204 UC204-12	PE204	0.74 0.74
UCPE205 205-13 205-14 205-15 205-16	25 13/16 7/8 15/16 1	36.5 1-7/16	140 5-1/2	105 4-1/8	38 1-1/2	13 1/2	19 3/4	15 19/32	71 2-25/32	48 1-57/64	34.1 1.3425	14.3 0.563	M10 3/8	UC205 UC205-13 UC205-14 UC205-15 UC205-16	PE205	0.89 0.93 0.92 0.90 0.89
UCPE206 206-17 206-18 206-19 206-20	30 1-1/16 1-1/8 1-3/16 1-1/4	42.9 1-11/16	160 6-19/64	121 4-3/4	44 1-47/64	17 43/64	20 25/32	17 21/32	84 3-5/16	53 2-5/64	38.1 1.5000	15.9 0.626	M14 1/2	UC206 UC206-17 UC206-18 UC206-19 UC206-20	PE206	1.37 1.38 1.39 1.37 1.36
UCPE207 207-20 207-21 207-22 207-23	35 1-1/4 1-5/16 1-3/8 1-7/16	47.6 1-7/8	167 6-9/16	127 5	48 1-7/8	17 43/64	20 25/32	18 45/64	93 3-21/32	59.5 2-11/32	42.9 1.6890	17.5 0.689	M14 1/2	UC207 UC207-20 UC207-21 UC207-22 UC207-23	PE207	1.72 1.78 1.75 1.72 1.69
UCPE208 208-24 208-25	40 1-1/2 1-9/16	49.2 1-15/16	184 7-1/4	137 5-13/32	54 2-1/8	17 43/64	20 25/32	18 45/64	100 3-15/16	69 2-23/32	49.2 1.9370	19 0.748	M14 1/2	UC208 UC208-24 UC208-25	PE208	2.20 2.24 2.21
UCPE209 209-26 209-27 209-28	45 1-5/8 1-11/16 1-3/4	54.0 2-1/8	190 7-15/32	146 5-3/4	54 2-1/8	17 43/64	20 25/32	20 25/32	106 4-11/64	69 2-23/32	49.2 1.9370	19 0.748	M14 1/2	UC209 UC209-26 UC209-27 UC209-28	PE209	2.44 2.54 2.50 2.46
UCPE210 210-29 210-30 210-31 210-32	50 1-13/16 1-7/8 1-15/16 2	57.2 2-1/4	206 8-1/8	159 6-1/4	60 2-3/8	20 25/32	23 29/32	21 53/64	113 4-29/64	74.5 2-15/16	51.6 2.0315	19 0.748	M16 5/8	UC210 UC210-29 UC210-30 UC210-31 UC210-32	PE210	3.05 3.17 3.12 3.07 3.03
UCPE211 211-32 211-33 211-34 211-35	55 2 2-1/16 2-1/8 2-3/16	63.5 2-1/2	219 8-5/8	171 6-47/64	60 2-3/8	20 25/32	23 29/32	23 29/32	125 4-59/64	76 3	55.6 2.1890	22.2 0.874	M16 5/8	UC211 UC211-32 UC211-33 UC211-34 UC211-35	PE211	3.73 3.88 3.82 3.78 3.71
UCPE212 212-36 212-37 212-38 212-39	60 2-1/4 2-5/16 2-3/8 2-7/16	69.8 2-3/4	241 9-1/2	184 7-1/4	70 2-3/4	20 25/32	23 29/32	25 63/64	138 5-7/16	89 3-1/2	65.1 2.5630	25.4 1.000	M16 5/8	UC212 UC212-36 UC212-37 UC212-38 UC212-39	PE212	5.25 5.38 5.30 5.23 5.16
UCPE213 213-40 213-41	65 2-1/2 2-9/16	76.2 3	265 10-7/16	203 8	70 2-3/4	25 63/64	28 1-3/32	27 1-1/16	150 5-29/32	89 3-1/2	65.1 2.5630	25.4 1.000	M20 3/4	UC213 UC213-40 UC213-41	PE213	6.22 6.31 6.22
UCPE214 214-42 214-43 214-44	70 2-5/8 2-11/16 2-3/4	79.4 3-1/8	266 10-15/32	210 8-17/64	72 2-27/32	25 63/64	28 1-3/32	27 1-1/16	156 6-9/64	98 3-55/64	74.6 2.9370	30.2 1.189	M20 3/4	UC214 UC214-42 UC214-43 UC214-44	PE214	6.83 7.04 6.94 6.84
UCPE215 215-45 215-46 215-47 215-48	75 2-13/16 2-7/8 2-15/16 3	82.6 3-1/4	275 10-53/64	217 8-35/64	74 2-29/32	25 63/64	28 1-3/32	28 1-3/32	162 6-3/8	99 3-57/64	77.8 3.0630	33.3 1.311	M20 3/4	UC215 UC215-45 UC215-46 UC215-47 UC215-48	PE215	7.56 7.56 7.81 7.70 7.50
UCPE216 216-49 216-50 216-51	80 3-1/16 3-1/8 3-3/16	88.9 3-1/2	292 11-1/2	232 9-1/8	78 3-1/16	25 63/64	28 1-3/32	30 1-3/16	174 6-27/32	109 4-19/64	82.6 3.2520	33.3 1.311	M20 3/4	UC216 UC216-49 UC216-50 UC216-51	PE216	9.22 9.40 9.27 9.14
UCPE217 217-52 217-53 217-55	85 3-1/4 3-5/16 3-7/16	95.2 3-3/4	310 12-13/64	247 9-23/32	83 3-17/64	25 63/64	28 1-3/32	32 1-1/4	185 7-9/32	113.2 4-29/64	85.7 3.3740	34.1 1.343	M20 3/4	UC217 UC217-52 UC217-53 UC217-55	PE217	11.23 11.35 11.31 11.02
UCPE218 218-56	90 3-1/2	101.6 4	327 12-7/8	262 10-5/16	88 3-15/32	27 1-1/16	30 1-3/16	33 1-19/64	198 7-51/64	123 4-27/32	96.0 3.7795	39.7 1.5630	M22 7/8	UC218 UC218-56	PE218	13.61 13.72



Soporte Brida Cuadrada Square Flange Unit

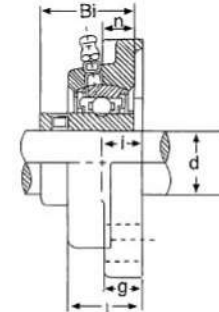
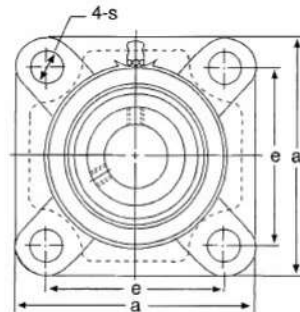


UCF200 Series

Tipo Type	Eje-Shaft d		Dimensiones Dimensions (mm)								Tamaño Perno Bolt Size mm	Peso Weight kg
	(in.)	(mm)	a	e	i	g	l	s	Bi	n		
UCWF201 201-8	1/2	12	76	54	15	11	25.5	12	27.4	11.5	M10	0.61
UCWF202 202-10	5/8	15	76	54	15	11	25.5	12	27.4	11.5	M10	0.61
UCWF203 203-11	11/16	17	76	54	15	11	25.5	12	27.4	11.5	M10	0.61
UCF204-12 204	3/4	20	86	64	15	11	25.5	12	31	12.7	M10	0.61
UCF205-14 205-15 205 205-16	7/8 15/16 1	25	95	70	16	13	27	12	34.1	14.3	M10	0.8
UCF206-18 206 206-19 206-20	1-1/8 1-3/16 1-1/4	30	108	83	18	13	31	12	38.1	15.9	M10	1.0
UCF207-20 207-21 207-22 207 207-23	1-1/4 1-5/16 1-3/8 1-7/16	35	117	92	19	15	34	14	42.9	17.5	M12	1.4
UCF208-24 208-25 208	1-1/2 1-9/16	40	130	102	21	15	36	16	49.2	19	M14	1.8
UCF209-26 209-27 209-28 209	1-5/8 1-11/16 1-3/4	45	137	105	22	16	38	16	49.2	19	M14	2.2
UCF210-30 210-31 210	1-7/8 1-15/16	50	143	111	22	16	40	16	51.6	19	M14	2.4
UCF211-32 211-34 211 211-35	2 2-1/8 2-3/16	55	162	130	25	18	43	19	55.6	22.2	M16	3.5
UCF212-36 212 212-38 212-39	2-1/4 2-3/8 2-7/16	60	175	143	29	18	48	19	65.1	25.4	M16	4.2
UCF213-40 213	2-1/2	65	187	149	30	22	50	19	65.1	25.4	M16	5.3
UCF214-44 214	2-3/4	70	193	152	31	22	54	19	74.6	30.2	M16	5.9
UCF215-47 215 215-48	2-15/16 3	75	200	159	34	22	56	19	77.8	33.3	M16	6.3
UCF216		80	208	165	34	22	58	23	82.6	33.3	M20	7.3
UCF217-52 217	3-1/4	85	220	175	36	24	63	23	85.7	34.1	M20	8.9
UCF218-56 218	3-1/2	90	235	187	40	25	68	23	96	39.7	M20	11.6

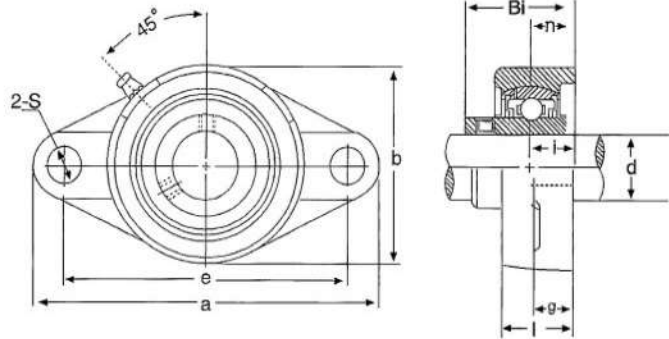
Soporte Brida Cuadrada

Square Flange Unit



UCF300 Series

Tipo Type	Eje-Shaft d		Dimensiones Dimensions (mm)								Tamaño Perno Bolt Size mm	Peso Weight kg
	(in.)	(mm)	a	e	i	g	l	s	Bi	n		
UCF305-14 305-15 306 305-16	7/8 15/16 1	25	110	80	16	13	29	16	38	15	M14	1.2
UCF306-18 306 306-19	1-1/8 1-3/16	30	125	95	18	15	32	16	43	17	M14	1.8
UCF307-20 307-21 307-22 307	1-1/4 1-5/16 1-3/8	35	135	100	20	16	36	19	48	19	M16	2.2
UCF308-24 308-25 308	1-1/2 1-9/16	40	150	112	23	17	40	19	52	19	M16	2.9
UCF309-26 309-27 309-28 309	1-5/8 1-11/16 1-3/4	45	160	125	25	18	44	19	57	22	M16	3.5
UCF310-30 310-31 310	1-7/8 1-15/16	50	175	132	28	19	48	23	61	22	M20	4.8
UCF311-32 311-34 311 311-35	2 2-1/8 2-3/16	55	185	140	30	20	52	23	66	25	M20	5.6
UCF312-36 312 312-38 312-39	2-1/4 2-3/8 2-7/16	60	195	150	33	22	56	23	71	26	M20	6.7
UCF313-40 313	2-1/2	65	208	166	33	22	58	23	75	30	M20	7.8
UCF314-44 314	2-3/4	70	226	178	36	25	61	25	78	33	M22	10.1
UCF315 315-48	3	75	236	184	39	25	66	25	82	32	M22	11.1
UCF316		80	250	196	38	27	68	31	86	34	M27	12.8
UCF317-52 317	3-1/4	85	260	204	44	27	74	31	96	40	M27	15.4
UCF318-56 318	3-1/2	90	280	216	44	30	76	35	96	40	M30	19.0
UCF319 319-60	3-3/4	95	290	228	59	30	94	35	103	41	M30	20.7
UCF320 320-64	4	100	310	242	59	32	94	38	108	42	M33	24.8
UCF321		105	310	242	59	32	94	38	112	44	M33	25.6
UCF322		110	340	266	60	35	96	41	117	46	M30	34.7
UCF324		120	370	290	65	40	110	41	126	51	M36	
UCF326		130	410	320	65	45	115	41	135	54	M36	
UCF328		140	450	350	75	55	125	41	145	59	M36	

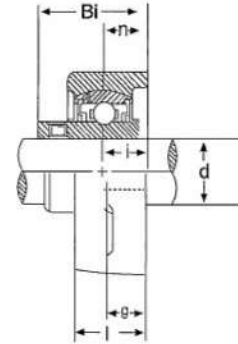
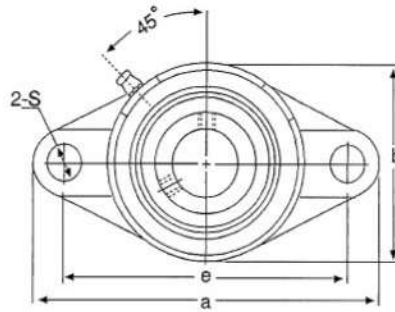


UCFL200 Series

Tipo Type	Eje-Shaft d		Dimensiones Dimensions (mm)									Tamaño Perno Bolt Size mm	Peso Weight kg
	(in.)	(mm)	a	e	i	g	l	s	b	Bi	n		
UCWFL201 201-8	1/2	12	99	76.5	15	11	25.5	11.5	57	30.9	11.5	M10	0.37
UCWFL202 202-10	5/8	15	99	76.5	15	11	25.5	11.5	57	30.9	11.5	M10	0.37
UCWFL203 203-11	11/16	17	99	76.5	15	11	25.5	11.5	57	30.9	11.5	M10	0.37
UCFL204-12 204	3/4	20	113	90	15	11	25.5	12	60	33.3	12.7	M10	0.45
UCFL205-14 205-15 205 205-16	7/8 15/16 1	25	130	99	16	13	27	16	68	35.7	14.3	M14	0.66
UCFL206-18 206 206-19 206-20	1-1/8 1-3/16 1-1/4	30	148	117	18	13	31	16	80	40.2	15.9	M14	0.86
UCFL207-20 207-21 207-22 207 207-23	1-1/4 1-5/16 1-3/8 1-7/16	35	161	130	19	15	34	16	90	44.1	17.5	M14	1.15
UCFL208-24 208-25 208	1-1/2 1-9/16	40	175	144	21	15	36	16	100	51.2	19	M14	1.46
UCFL209-26 209-27 209-28 209	1-5/8 1-11/16 1-3/4	45	188	148	22	16	38	19	108	52.2	19	M16	1.85
UCFL210-30 210-31 210 210-32	1-7/8 1-15/16 2	50	197	157	22	16	40	19	115	54.6	19	M16	1.98
UCFL211-32 211-34 211 211-35	2 2-1/8 2-3/16	55	224	184	25	18	43	19	130	58.4	22.2	M16	2.9
UCFL212-36 212 212-38 212-39	2-1/4 2-3/8 2-7/16	60	250	202	29	18	48	23	140	68.7	25.4	M20	3.7
UCFL213-40 213	2-1/2	65	258	210	30	22	50	23	155	69.7	25.4	M20	4.76
UCFL214-44 214	2-3/4	70	265	216	31	22	54	23	160	75.4	30.2	M20	5.3
UCFL215-47 215 215-48	2-15/16 3	75	275	225	34	22	56	23	165	78.5	33.3	M20	5.85
UCFL216		80	290	233	34	22	58	25	180	83.3	33.3	M22	7
UCFL217-52 217	3-1/4	85	305	248	36	24	63	25	190	87.6	34.1	M22	9.8
UCFL218-56 218	3-1/2	90	320	265	40	24	68	25	205	96.3	39.7	M22	12.4

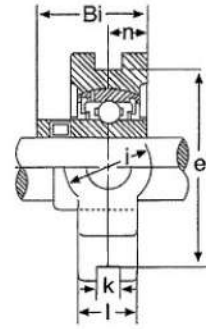
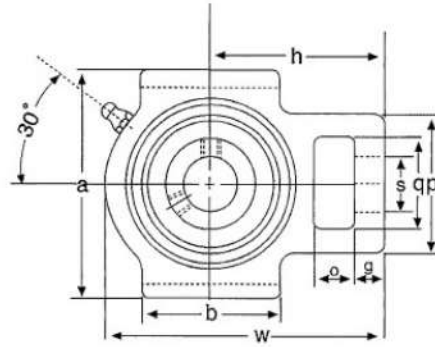
Soporte de Brida Ovalada

Oval Flange Unit



UCFL300 Series

Tipo Type	Eje-Shaft d		Dimensiones Dimensions (mm)									Tamaño Perno Bolt Size mm	Peso Weight kg
	(in.)	(mm)	a	e	i	g	l	s	b	Bi	n		
UCFL305-14 305-15 305 305-16	7/8 15/16 1	25	150	113	16	13	29	19	80	38	15	M16	1.10
UCFL306-18 306 306-19	1-1/8 1-3/16	30	180	134	18	15	32	23	90	43	17	M20	1.60
UCFL307-20 307-21 307-22 307	1-1/4 1-5/16 1-3/8	35	185	141	20	16	36	23	100	48	19	M20	2.00
UCFL308-24 308-25 308	1-1/2 1-9/16	40	200	158	23	17	40	23	112	52	19	M20	2.60
UCFL309-26 309-27 309-28 309	1-5/8 1-11/16 1-3/4	45	230	177	25	18	44	25	125	57	22	M22	3.63
UCFL310-30 310-31 310	1-7/8 1-15/16	50	240	187	28	19	48	25	140	61	22	M22	4.60
UCFL311-32 311-34 311 311-35	2 2-1/8 2-3/16	55	250	198	30	20	52	25	150	66	25	M22	5.30
UCFL312-36 312 312-38 312-39	2-1/4 2-3/8 2-7/16	60	270	212	33	22	56	31	160	71	26	M27	6.40
UCFL313-40 313	2-1/2	65	295	240	33	25	58	31	175	75	30	M27	8.20
UCFL314-44 314	2-3/4	70	315	250	36	28	61	35	185	78	33	M30	10.0
UCFL315 315-48	3	75	320	260	39	30	66	35	195	82	32	M30	11.0
UCFL316		80	355	285	38	32	68	38	210	86	34	M33	14.3
UCFL317		85	370	300	44	32	74	38	220	96	40	M33	16.2
UCFL318		90	385	315	44	36	76	38	235	96	40	M33	19.2
UCFL319		95	405	330	59	40	94	41	250	103	41	M36	21.8
UCFL320		100	440	360	59	40	94	44	270	108	42	M39	26.5
UCFL321		105	440	360	59	40	94	44	270	112	44	M39	
UCFL322		110	470	390	60	42	96	44	300	117	46	M39	
UCFL324		120	520	430	65	48	110	47	330	126	51	M42	
UCFL326		130	550	460	65	50	115	47	360	135	54	M42	
UCFL328		140	600	500	75	60	125	51	400	145	59	M42	

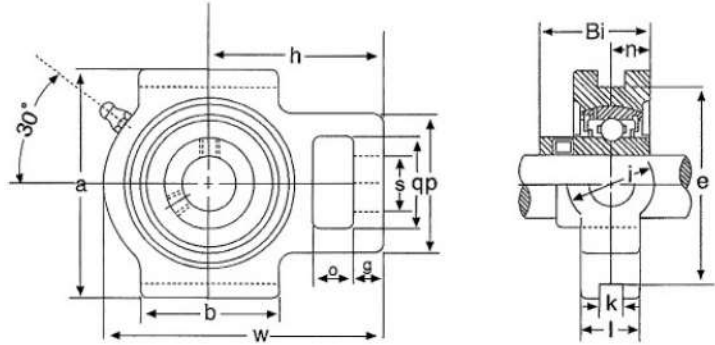


UCT200 Series

Tipo Type	Eje-Shaft d		Dimensiones Dimensions (mm)														Peso Weight kg	
	(in.)	(mm)	o	g	p	q	s	b	k	e	a	w	i	l	h	Bi		n
UCWT201 201-8	1/2	12	15	9	46	31	18	46	12	70	82	88	82	21	58	27.4	11.5	0.72
UCWT202 202-10	5/8	15	15	9	46	31	18	46	12	70	82	88	82	21	58	27.4	11.5	0.72
UCWT203 203-11	11/16	17	15	9	46	31	18	46	12	70	82	88	82	21	58	27.4	11.5	0.72
UCT204-12 204	3/4	20	16	10	51	32	19	51	12	76	89	94	82	21	61	31	12.7	0.72
UCT205-14 205-15 205 205-16	7/8 15/16 1	25	16	10	51	32	19	51	12	76	89	97	32	24	62	34.1	14.3	0.8
UCT206-18 206 206-19 206-20	1-1/8 1-3/16 1-1/4	30	16	10	56	37	22	57	12	89	102	113	37	28	70	38.1	15.9	1.26
UCT207-20 207-21 207-22 207 207-23	1-1/4 1-5/16 1-3/8 1-7/16	35	16	13	64	37	22	64	12	89	102	129	37	30	78	42.9	17.5	1.68
UCT208-24 208-25 208	1-1/2 1-9/16	40	19	16	83	49	29	83	16	102	114	144	49	33	88	49.2	19	2.28
UCT209-26 209-27 209-28 209	1-5/8 1-11/16 1-3/4	45	19	16	83	49	29	83	16	102	117	144	49	35	87	49.2	19	2.52
UCT210-30 210-31 210	1-7/8 1-15/16	50	19	16	83	49	29	86	16	102	117	149	49	37	90	51.6	19	2.75
UCT211-32 211-34 211 211-35	2 2-1/8 2-3/16	55	25	19	102	64	35	95	22	130	146	171	64	38	106	55.6	22.2	4.1
UCT212-36 212 212-38 212-39	2-1/4 2-3/8 2-7/16	60	32	19	102	64	35	102	22	130	146	194	64	42	119	65.1	25.4	4.9
UCT213-40 213	2-1/2	65	32	21	111	70	41	121	26	151	167	224	70	44	137	65.1	25.4	6.7
UCT214-44 214	2-3/4	70	32	21	111	70	41	121	26	151	167	224	70	46	137	74.6	30.2	6.9
UCT215 215-48	3	75	32	21	111	70	41	121	26	151	167	232	70	48	140	77.8	33.3	7.4
UCT216		80	32	21	111	70	41	121	26	165	184	235	70	51	140	82.6	33.3	8.1
UCT217-52 217	3-1/4	85	38	29	124	73	48	157	30	173	198	260	73	54	162	85.7	34.1	1.1
UCT218-56 218	3-1/2	90	40	30	130	80	48	140	30	190	215	275	80	55	170			

Soportes Tensores

Take-up Unit



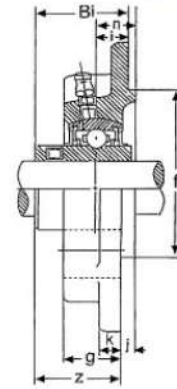
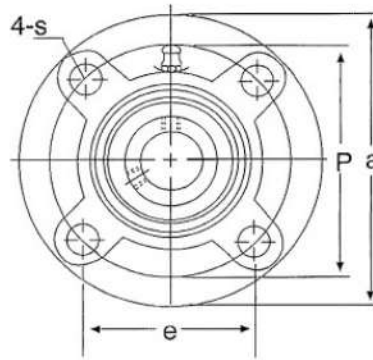
UCT300 Series

Tipo Type	Eje-Shaft d		Dimensiones Dimensions (mm)															Peso Weight kg
	(in.)	(mm)	o	g	p	q	s	b	k	e	a	w	i	l	h	Bi	n	
UCT305-14 305-15 305 305-16	7/8 15/16 1	25	16	12	62	36	26	65	12	80	89	122	36	26	76	38	15	1.41
UCT306-18 306 306-19	1-1/8 1-3/16	30	18	14	70	41	28	74	16	90	100	137	41	28	85	43	17	1.85
UCT307-20 307-21 307-22 307	1-1/4 1-5/16 1-3/8	35	20	15	75	45	30	80	16	100	110	150	45	32	94	48	19	2.45
UCT308-24 308-25 308	1-1/2 1-9/16	40	22	17	83	50	32	89	18	112	124	162	50	34	100	52	19	3.09
UCT309-26 309-27 309-28 309	1-5/8 1-11/16 1-3/4	45	24	18	90	55	34	97	18	125	138	178	55	38	110	57	22	4.08
UCT310-30 310-31 310	1-7/8 1-15/16	50	27	20	98	61	37	106	20	140	151	191	61	40	117	61	22	5.25
UCT311-32 311-34 311 311-35	2 2-1/8 2-3/16	55	29	21	105	66	39	115	22	150	163	207	66	44	127	66	25	6.41
UCT312-36 312 312-38 312-39	2-1/4 2-3/8 2-7/16	60	31	23	113	71	41	123	22	160	178	220	71	46	135	71	26	7.61
UCT313-40 313	2-1/2	65	32	25	116	70	43	134	26	170	190	238	80	50	146	75	30	9.22
UCT314-44 314	2-3/4	70	36	25	130	85	46	140	26	180	202	252	90	52	155	78	33	11.4
UCT315 315-48	3	75	36	25	132	85	46	150	26	192	216	262	90	55	160	82	32	12.9
UCT316		80	42	28	150	98	53	160	30	204	230	282	102	60	174	86	34	15.65
UCT317-52 317	3-1/4	85	42	30	152	98	53	170	32	214	240	298	102	64	183	96	40	19.34
UCT318-56 318	3-1/2	90	46	30	160	106	57	175	32	228	255	312	110	66	192	96	40	21.25
UCT319 319-60	3-3/4	95	46	31	165	106	57	180	35	240	270	322	110	72	197	103	41	24.4
UCT320 320-64	4	100	48	32	175	115	59	200	35	260	290	345	120	75	210	108	42	30.6
UCT321		105	48	32	175	115	59	200	35	260	290	345	120	75	210	112	44	
UCT322		110	52	38	185	125	65	215	38	285	320	385	130	80	235	117	46	
UCT324		120	60	42	210	140	70	230	45	320	355	432	140	90	267	126	51	
UCT326		130	65	45	220	150	75	240	50	350	385	465	150	100	285	135	54	
UCT328		140	70	50	230	160	80	255	50	380	415	515	155	100	315	145	59	



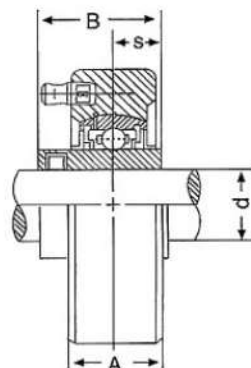
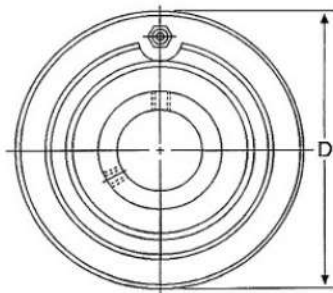
Soporte de cartucho de brida redonda/ Soporte de cartucho cilíndrico

Round Flange Cartridge Unit/ Cylindrical Cartridge Unit



UCFC200 Series

Tipo Type	Eje Shaft d (mm)	Dimensiones Dimensions (mm)												Tamaño Perno Bolt Size mm	Peso Weight kg
		a	p	e	i	s	j	k	g	f	z	Bi	n		
UCWFC201	12	90	70	49.5	9	10	4	7	19.5	55	28.3	27.4	11.5	8	0.64
UCWFC202	15	90	70	49.5	9	10	4	7	19.5	55	28.3	27.4	11.5	8	0.60
UCWFC203	17	90	70	49.5	9	10	4	7	19.5	55	28.3	27.4	11.5	8	0.58
UCFC204	20	100	78	55.1	10	12	5	7	20.5	62	28.3	31	12.7	10	0.75
UCFC205	25	115	90	63.6	10	12	6	7	21	70	28.7	34.1	14.3	10	1
UCFC206	30	125	100	70.7	10	12	8	8	23	80	32.2	38.1	15.9	10	1.3
UCFC207	35	135	110	77.8	11	14	8	9	26	90	36.4	42.9	17.5	12	1.75
UCFC208	40	145	120	84.8	11	14	10	9	26	100	41.2	49.2	19	12	2
UCFC209	45	160	132	93.3	10	16	12	14	26	105	40.2	49.2	19	14	2.5
UCFC210	50	165	138	97.6	10	16	12	14	28	110	42.6	51.6	19	14	2.95
UCFC211	55	185	150	106.1	13		12	15	31	125	46.4	55.6	22.2	16	4
UCFC212	60	195	160	113.1	17	19	12	15	36	135	56.7	65.1	25.4	16	4.9
UCFC213	65	205	170	120.2	16	19	14	15	36	145	56.7	65.1	25.4	16	5.35
UCFC214	70	215	177	125.1	17	19	14	18	40	150	61.4	74.6	30.2	16	6.9
UCFC215	75	220	184	130.1	18	19	16	18	40	160	62.5	77.8	33.3	16	7.5
UCFC216	80	240	200	141.4	18	23	16	18	42	170	67.3	82.6	33.3	20	8.7
UCFC217	85	250	208	147.1	18	23	18	20	45	180	69.6	85.7	34.1	20	10.3
UCFC218	90	265	220	155.5	22	23	18	20	50	190	78.3	96.0	39.7	20	13.5

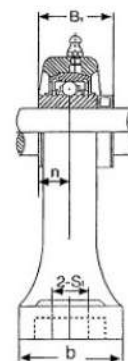
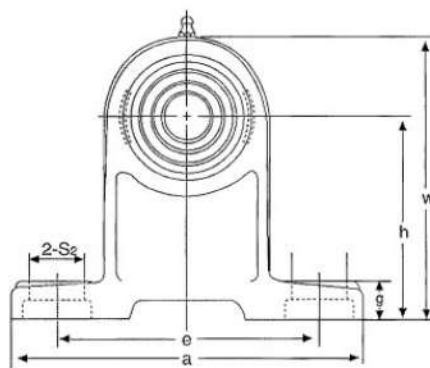


UCC200 Series

Tipo Type	Eje Shaft d (mm)	Dimensiones Dimensions (mm)				Peso Weight kg
		D	A	B	S	
UCWC201	12	67	20	27.4	11.5	0.56
UCWC202	15	67	20	27.4	11.5	0.52
UCWC203	17	67	20	27.4	11.5	0.51
UCC204	20	72	20	31.0	12.7	0.49
UCC205	25	80	22	34	14.3	0.65
UCC206	30	85	27	38.1	15.9	0.82
UCC207	35	90	28	42.9	17.5	0.93
UCC208	40	100	30	49.2	19.0	1.25
UCC209	45	110	31	49.2	19.0	1.53
UCC210	50	120	33	51.6	19.0	1.93
UCC211	55	125	35	55.6	22.2	2.14
UCC212	60	130	38	65.1	25.4	2.52
UCC213	65	140	40	65.1	25.4	2.97

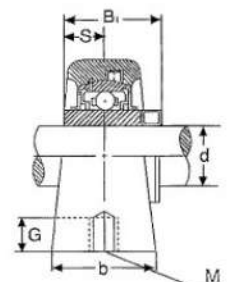
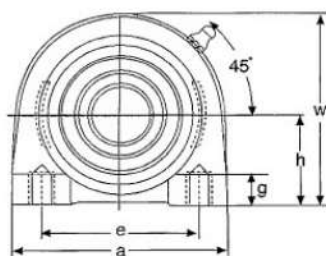
Soportes de Pie

Pillow Blocks



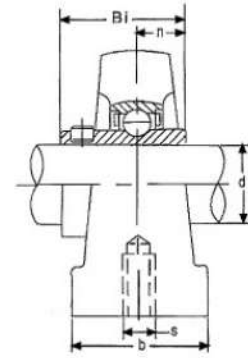
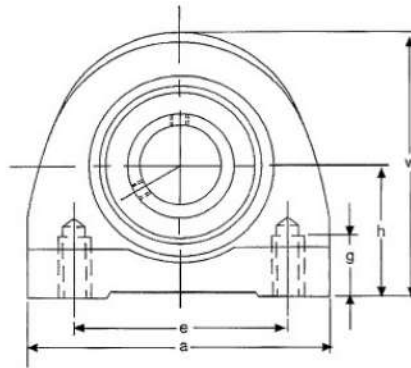
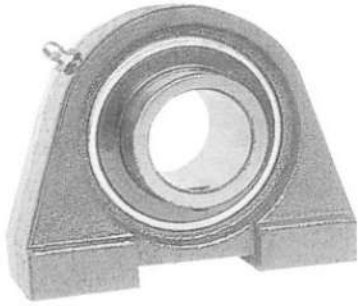
UCPH200 Series

Tipo Type	Eje Shaft d(mm)	Dimensiones Dimensions (mm)										Tamaño Perno Bolt Size mm	Peso Weight kg
		h	a	e	b	S ₁	S ₂	g	w	Bi	n		
UCPH202	15	70	127	95	40	13	19	15	100	27.4	11.5	10	0.96
UCPH203	17	70	127	95	40	13	19	15	100	27.4	11.5	10	0.96
UCPH204	20	70	127	95	40	13	19	15	101	31	12.7	10	0.96
UCPH205	25	80	140	105	50	13	19	16	114	34.11	14.3	10	1.20
UCPH206	30	90	165	121	50	17	21	18	130	38.1	15.9	14	1.60
UCPH207	35	95	167	127	60	17	21	19	140	42.9	17.5	14	2.00
UCPH208	40	100	184	137	70	17	25	19	149	49.2	19.0	14	2.70
UCPH209	45	105	190	147	70	17	24	21	159	49.2	19.0	14	3.00
UCPH210	50	110	207	158	70	20	25	22	166	51.6	19.0	16	3.50
UCPH211	55	120	219	171	75	20	25	23	181	55.6	22.2	16	5.47
UCPH212	60	130	235	186	85	20	25	24	197	65.1	25.4	16	6.31



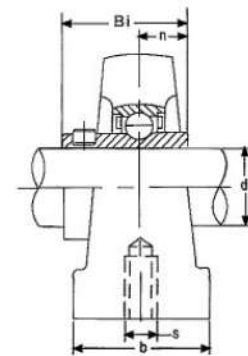
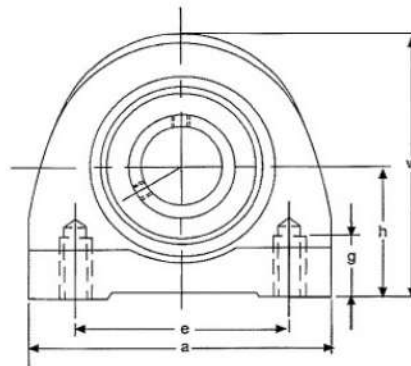
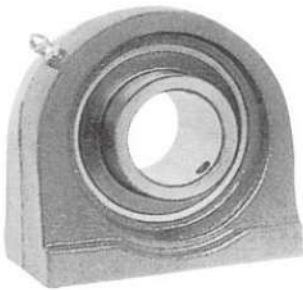
UCPA200 Series

Tipo Type	Eje Shaft d (mm)	Dimensiones Dimensions (mm)									Tamaño Perno Bolt Size mm	Peso Weight kg
		h	a	e	b	G	g	w	Bi	s		
UCWPA201	12	30.2	70	48	36	12	11	57	27.4	11.5	M10	0.67
UCWPA202	15	30.2	70	48	36	12	11	57	27.4	11.5	M10	0.63
UCWPA203	17	30.2	70	48	36	13	11	57	27.4	11.5	M10	0.62
UCPA204	20	30.2	75	52	39	13	12	62	31.0	12.7	M10	0.60
UCPA205	25	36.5	84	56	38	15	14	72	34.1	14.3	M10	0.81
UCPA206	30	42.9	94	66	50	18	13	84	38.1	15.9	M14	1.20
UCPA207	35	47.6	110	80	48	20	13	95	42.9	17.5	M14	1.70
UCPA208	40	49.2	116	84	60	20	13	100	49.2	19.0	M14	1.90
UCPA209	45	54.2	120	90	61	25	14	108	49.2	19.0	M14	2.20
UCPA210	50	57.2	132	94	66	25	15	116	51.6	19.0	M16	2.60
UCPA211	55	63.5	140	104	67	25	15	125	55.6	22.2	M16	3.00
UCPA212	60	69.9	151	114	68	25	16	138	65.1	25.4	M16	4.24
UCPA213	65	76.2	160	124	70	25	16	150	65.1	25.4	M16	6.23



UCPW200 Series

Tipo Type	Eje Shaft d(mm)	Dimensiones Dimensions (mm)								Tamaño Perno Bolt Size mm	Peso Weight kg
		h	a	e	b	g	w	Bi	n		
UCPW201	12	33.3	65	50.8	32	13	64	31	12.7	M8	0.8
UCPW202	15	33.3	65	50.8	32	13	64	31	12.7	M8	0.79
UCPW203	17	33.3	65	50.8	32	13	64	31	12.7	M8	0.77
UCPW204	20	33.3	65	50.8	32	13	64	31	12.7	M8	0.76
UCPW205	25	36.5	70	50.8	36	13	70	34	14.3	M10	0.91
UCPW206	30	42.9	98	76.2	38	16	82	38.1	15.9	M10	1.42
UCPW207	35	47.6	103	82.6	45	19	93	42.9	17.5	M12	1.91
UCPW208	40	49.2	116	88.9	47	19	99	49.2	19	M12	2.28
UCPW209	45	53.9	120	95.3	48	19	107	49.2	19	M12	2.61
UCPW210	50	57.2	135	101.6	54	22	115	51.6	19	M16	3.28

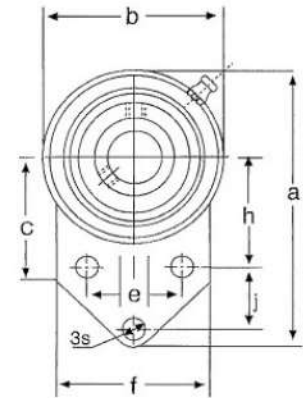
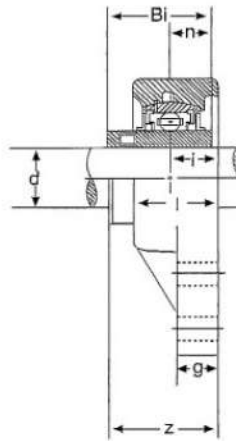
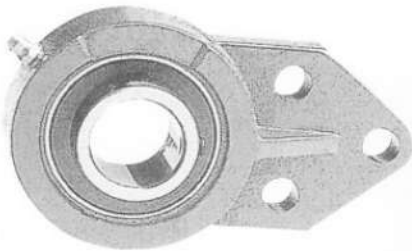


UCPG200 Series

Tipo Type	Eje Shaft d(mm)	Dimensiones Dimensions (mm)								Tamaño Perno Bolt Size mm	Peso Weight kg
		h	a	e	b	g	w	Bi	n		
UCPG201	12	33.3	70	49	38	14	64	31	12.7	M8	0.8
UCPG202	15	33.3	70	49	38	14	64	31	12.7	M8	0.79
UCPG203	17	33.3	70	49	38	14	64	31	12.7	M8	0.77
UCPG204	20	33.3	70	49	38	14	64	31	12.7	M8	0.76
UCPG205	25	36.5	75	50	38	15	70	34	14.3	M10	0.91
UCPG206	30	42.9	85	60	48	17	83	38.1	15.9	M10	1.42
UCPG207	35	47.6	100	68	48	20	93	42.9	17.5	M12	1.91
UCPG208	40	49.2	110	78	54	20	98	49.2	19	M12	2.28
UCPG209	45	53.9	120	85	54	20	106	49.2	19	M12	2.61
UCPG210	50	57.2	135	95	60	21	114	51.6	19	M16	3.28

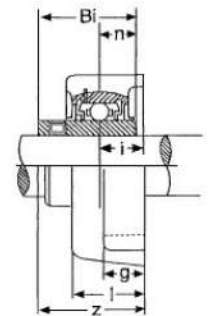
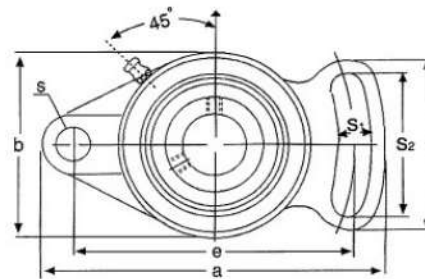
Soportes de Brida/ Soporte de Brida Autoalineantes

Flange Bracket Unit/ Adjustable Flange Unit



UCWB200 Series

Tipo Type	Eje Shaft d(mm)	Dimensiones Dimensions (mm)														Tamaño Perno Bolt Size mm	Peso Weight kg
		a	h	e	j	i	g	l	c	s	b	f	z	Bi	n		
UCWFB201	12	110	42	32	27	13	13	25.5	52	10	62	52	33.3	27.4	11.5	M8	0.62
UCWFB202	15	110	42	32	27	13	13	25.5	52	10	62	52	33.3	27.4	11.5	M8	0.58
UCWFB203	17	110	42	32	27	13	13	25.5	52	10	62	52	33.3	27.4	11.5	M8	0.57
UCFB204	20	110	42	32	27	15	13	25.5	52	10	62	52	33.3	31.0	12.7	M8	0.62
UCFB205	25	116	45	34	27	16	13	27.0	52	10	68	56	35.7	34.1	14.3	M8	0.69
UCFB206	30	130	50	40	29	18	13	31.0	55	10	78	65	40.2	38.1	15.9	M8	0.93
UCFB207	35	144	55	46	32	19	15	34.0	62	10	90	70	44.4	42.9	17.5	M8	1.30
UCFB208	40	164	60	50	41	21	16	36.0	72	12	100	78	51.2	49.2	19.0	M10	1.80
UCFB209	45	174	65	54	43	22	18	38.0	76	12	106	80	52.2	49.2	19.0	M10	2.00
UCFB210	50	184	68	58	46	22	18	40.0	82	12	112	86	54.6	51.6	19.0	M10	2.30

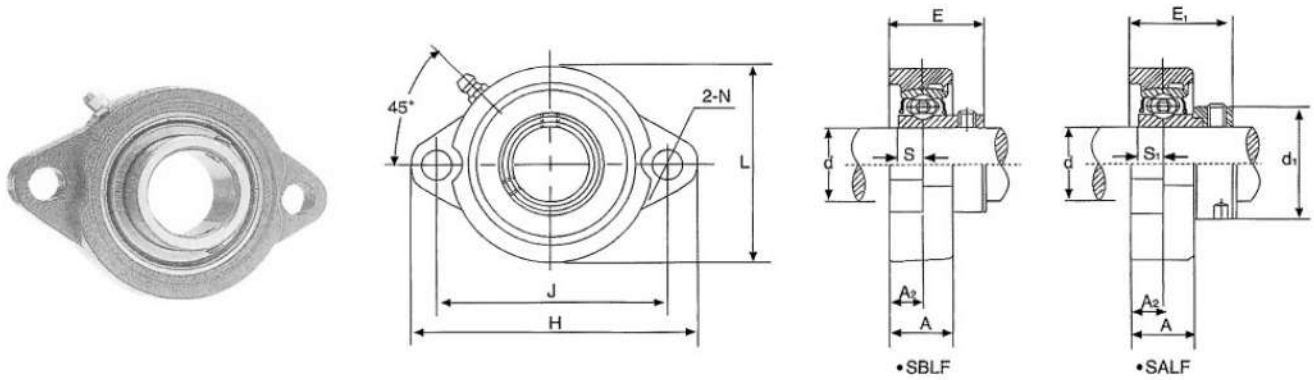


UCFA200 Series

Tipo Type	Eje Shaft d(mm)	Dimensiones Dimensions (mm)														Tamaño Perno Bolt Size mm	Peso Weight kg
		a	e	i	g	l	s	S ₁	S ₂	b	f	z	Bi	n			
UCWFA201	12	98	78	15	11	25.5	10	10	40	60	54	33.3	27.4	11.5	M8	0.53	
UCWFA202	15	98	78	15	11	25.5	10	10	40	60	54	33.3	27.4	11.5	M8	0.49	
UCWFA203	17	98	78	15	11	25.5	10	10	40	60	54	33.3	27.4	11.5	M8	0.48	
UCFA204	20	98	78	15	12	25.5	10	10	40	60	54	33.3	31.0	12.7	M8	0.46	
UCFA205	25	125	98	16	14	27.0	12	13	51	68	65	35.7	34.1	14.3	M10	0.69	
UCFA206	30	144	117	18	14	31.0	12	13	58	80	72	40.2	38.1	15.9	M10	1.00	
UCFA207	35	161	130	19	16	34.0	15	15	66	90	82	44.4	42.9	17.5	M12	1.50	
UCFA208	40	175	144	21	16	36.0	15	15	71	100	87	51.2	49.2	19.0	M12	1.80	
UCFA209	45	181	148	22	18	38.0	15	15	72	108	90	52.2	49.2	19.0	M14	2.10	
UCFA210	50	190	157	22	18	40.0	15	15	76	115	94	54.6	51.6	19.0	M14	2.30	
UCFA211	55	219	184	25	20	43.0	16	17	86	130	104	58.4	55.6	22.2	M14	3.60	

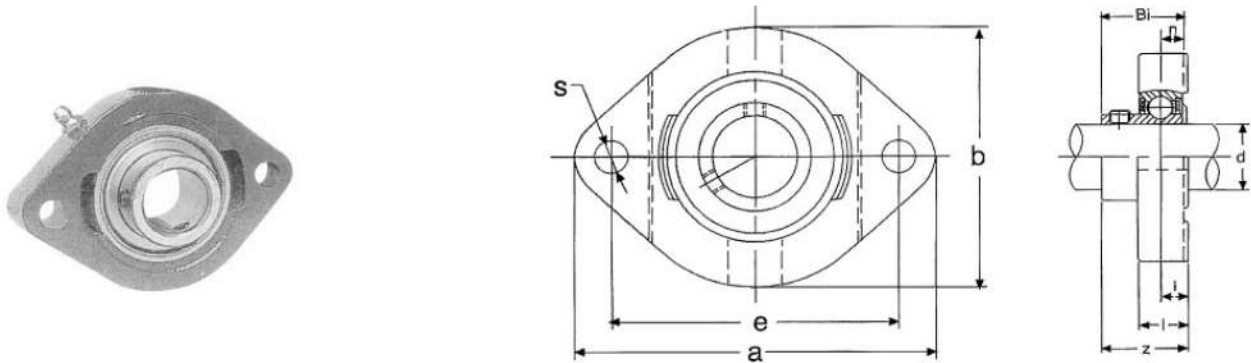


Soporte de Brida Ovalada de servicio liviano Light-duty Oval Flange Unit



SBLF200, SALF200 Series

Tipo Type	Dimensiones Dimensions (mm)												Tamaño Perno Bolt Size mm	Rodamiento Bearing Nº	Peso Soporte Housing weight (kg)				
	d	H	J	L	A ₂	A	N	S	S ₁	E	E ₁	d ₁			SBLF	SALF			
SBLF SALF	201	12	81	63.5	56	9.5	18.0	8	6.0	6.5	25.5	32.0	28.6	M6	SB SA	201	LF203	0.27	0.28
	202	15	81	63.5	56	9.5	18.0	8	6.0	6.5	25.5	32.0	28.6	M6		202	LF203	0.25	0.28
	203	17	81	63.5	56	9.5	18.0	8	6.0	6.5	25.5	32.0	28.6	M6		203	LF203	0.25	0.28
	204	20	90	71.5	61	11.0	20.0	10	7.0	7.0	29.0	33.5	33.3	M8		204	LF204	0.33	0.33
	205	25	95	76.0	64	11.0	20.0	10	7.5	7.5	30.5	34.0	38.1	M8		205	LF205	0.38	0.42
	206	30	113	90.5	76	12.0	22.5	12	8.0	8.0	34.0	37.9	44.5	M10		206	LF206	0.56	0.60
	207	35	122	100	89	13.0	24.0	12	8.5	8.5	36.5	41.0	55.6	M10		207	LF207	0.80	0.85

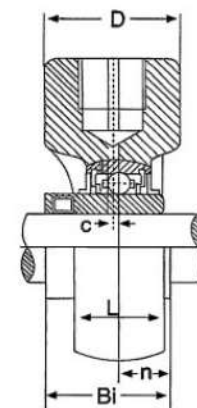
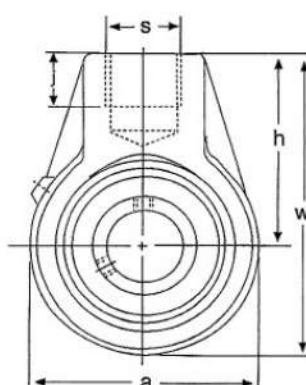


SBLW200, SBFD200 Series

Tipo Type	Eje Shaft d(mm)	Dimensiones Dimensions (mm)									Tamaño Perno Bolt Size mm	Peso Weight kg
		a	e	i	l	s	b	z	Bi	n		
SBFW201 SBFD201	12	81	63.5	8.5	15	7	58.7	24.5	22	6	M6	0.28
SBFW202 SBFD202	15	81	63.5	8.5	15	7	58.7	24.5	22	6	M6	0.27
SBFW203 SBFD203	17	81	63.5	8.5	15	7	58.7	24.5	22	6	M6	0.26
SBFW204 SBFD204	20	90.5	71.4	9.5	17	9	66.5	27.5	25	7	M8	0.37
SBFW205 SBFD205	25	97	76.2	9.5	17.5	9	71	29	27	7.5	M8	0.44
SBFW206 SBFD206	30	112.5	90.5	11.5	20.5	11.5	84	32.5	30	8	M10	0.7
SBFW207 SBFD207	35	126	100	12.5	22	11.5	94	38	32	8.5	M10	0.91
SBFW208 SBFD208	40	148	119	14.5	25	13.5	104	43.5	34	9	M12	1.2

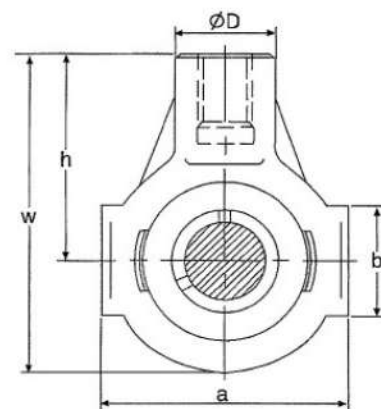
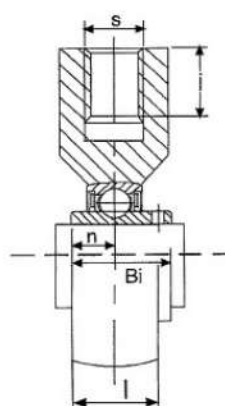
Soportes Colgantes

Hanger Unit



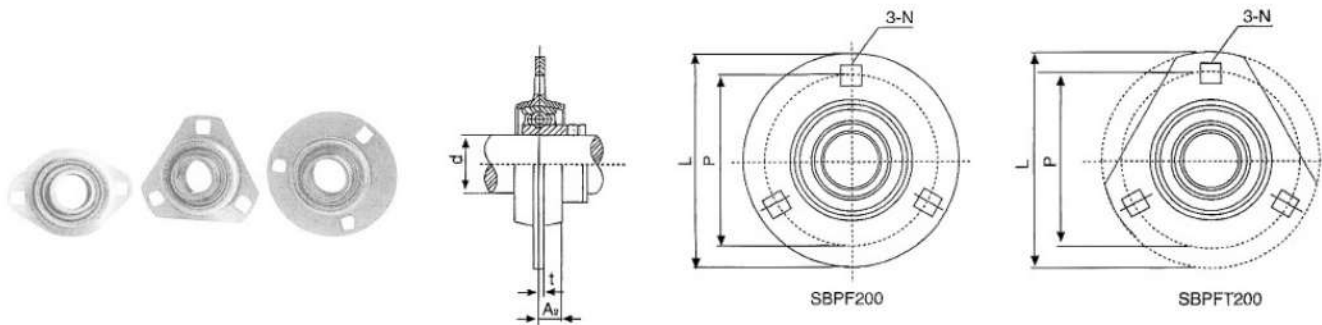
UCHA200 Series

Tipo Type	Eje Shaft d(mm)	Dimensiones Dimensions (mm)										Peso Weight kg
		a	w	h	D	S(in)	J	Bi	n	c	L	
UCHA204	20	64	96	64	40	G3/4	19	31	12.7	0	21	0.70
UCHA205	25	70	103	64	40	G3/4	19	34	14.3	0	24	0.74
UCHA206	30	78	103	64	40	G3/4	19	38.1	15.9	0	28	0.91
UCHA207	35	92	116	70	40	G3/4	19	42.9	17.5	0	30	1.19
UCHA208	40	96	121	73	40	G3/4	19	49.2	19.0	2	33	1.36
UCHA209	45	108	136	82	48	G1	21	49.2	19.0	4	35	1.78
UCHA210	50	118	142	83	48	G1	21	51.6	19.0	5	37	1.93
UCHA211	55	126	150	87	60	G5/4	25	55.6	22.2	7	38	3.50
UCHA212	60	142	173	102	60	G5/4	28	65.1	25.4	9	42	3.90
UCHA213	65	166	200	117	70	G5/4	32	65.1	25.4	9.5	44	



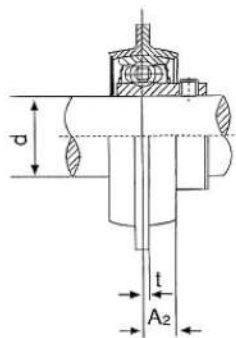
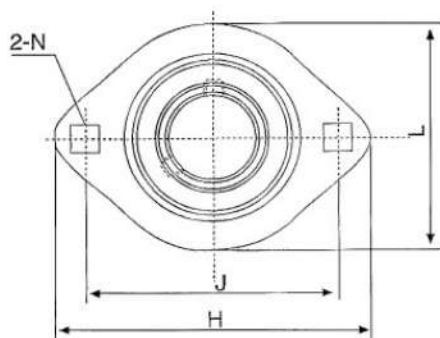
UCHE200 Series

Tipo Type	Eje Shaft d(mm)	Dimensiones Dimensions (mm)									S	Peso Weight kg
		a	w	h	D	J	Bi	n	l	b		
UCHE201	12	65	91	58	30	21	31	12.7	25	38	M16	0.61
UCHE202	15	65	91	58	30	21	31	12.7	25	38	M16	0.61
UCHE203	17	65	91	58	30	21	31	12.7	25	38	M16	0.61
UCHE204	20	65	91	58	30	21	31	12.7	25	38	M16	0.61
UCHE205	25	70	99	64	35	22	34	14.3	28	38	M20	0.79
UCHE206	30	85	114	72	40	24	38.1	15.9	32	40	M24	1.23
UCHE207	35	90	122	76	40	24	42.9	17.5	32	48	M24	1.44
UCHE208	40	100	135	85	40	24	49.2	19	36	45	M24	1.82
UCHE209	45	110	145	90	40	24	49.2	19	40	46	M24	2.05
UCHE210	50	110	145	90	40	24	51.6	19	40	46	M24	2.13

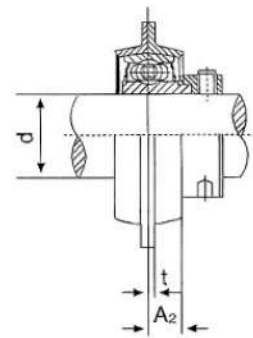


PF200, PFT200 Series

Soporte Housing Nº	Dimensiones Dimensions (mm)						Tamaño Perno Bolt Size mm	Rodamiento Bearing Nº	Peso Weight kg		
	d	L	P	A ₂	t	N					
PF PFT	201	12	81	63.5	7	2	7	1/4	SA SB	201	0.14
	202	15	81	63.5	7	2	7	1/4		202	0.14
	203	17	81	63.5	7	2	7	1/4		203	0.14
	204	20	90	71	8	2	9	5/16		204	0.14
	205	25	95	76	9	2	9	5/16		205	0.17
	206	30	113	90	9	2.5	11	3/8		206	0.20
	207	35	122	100	10	2.5	11	3/8		207	0.30
	208	40	148	119	11.5	3.5	13.5	1/2		208	0.34
	209	45	150	120.5	11.5	3.5	13.5	1/2		209	0.64
	210	50	157	127	12.5	4	13.5	1/2		210	
	211	55	168	138	13	4	13.5	1/2		211	
	212	60	177	148	14	4	13.5	1/2		212	



•SBPFL200



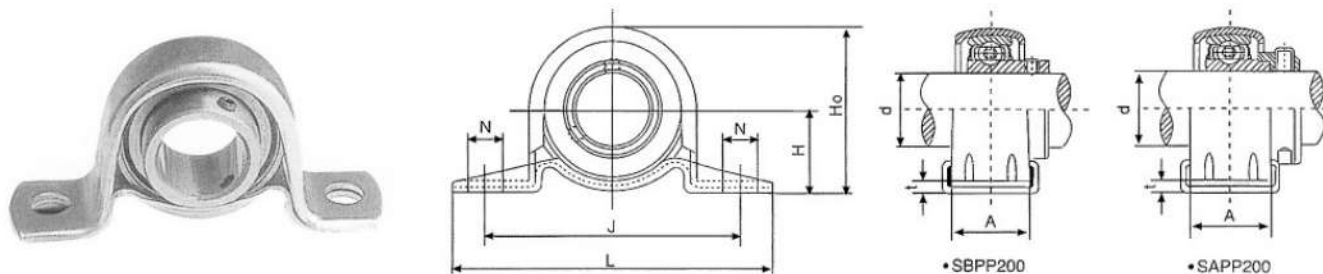
•SAPFL200

PFL200 Series

Soporte Housing Nº	Dimensiones Dimensions (mm)							Tamaño Perno Bolt Size mm	Rodamiento Bearing Nº	Peso Weight kg	
	d	H	J	A ₂	L	N	t				
PFL201	12	81	63.5	7	59	7	2	1/4	SA SB	201	0.09
PFL202	15	81	63.5	7	59	7	2	1/4		202	0.09
PFL203	17	81	63.5	7	59	7	2	1/4		203	0.09
PFL204	20	90	71.5	9	67	9	2	5/16		204	0.10
PFL205	25	95	76.0	9	71	9	2	5/16		205	0.12
PFL206	30	113	90.5	11	84	11	2.5	3/8		206	0.18
PFL207	35	122	100	11	94	11	2.5	3/8		207	0.2
PFL208	40	148	119	13.5	106	13.5	3.5	1/2		208	0.25

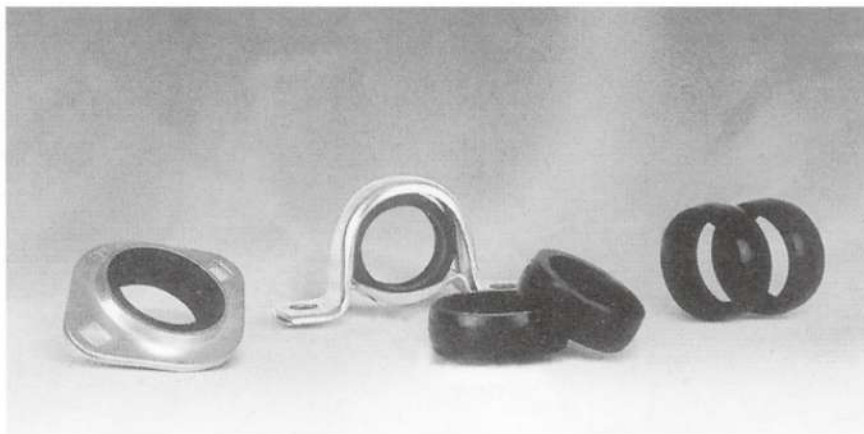
Soporte de Acero Prensado

Pressed Steel Housing



PP200 Series

Soporte Housing Nº	Dimensiones Dimensions (mm)								Tamaño Perno Bolt Size mm	Rodamiento Bearing Nº	Peso Weight kg	
	d	H	J	L	A ₂	N	t	Ho				
PP201	12	22.2	68	86	14	9.5	2.4	43.8	M8	SB SA	201	0.06
PP202	15	22.2	68	86	14	9.5	2.4	43.8	M8		202	0.06
PP203	17	22.2	68	86	14	9.5	2.4	43.8	M8		203	0.06
PP204	20	25.4	76	98	18.2	9.5	3	50.2	M8		204	0.1
PP205	25	28.6	86	108	19.2	11.5	4.0	56.5	M10		205	0.13
PP206	30	33.3	95	117	21.8	11.5	4.0	66.1	M10		206	0.17
PP207	35	39.7	106	129	23	11.5	5	78.0	M10		207	0.2
PP208	40	43.7	120	148	24.5	12	5	86.5	M10		208	0.3
PP209	45	46.8	128	156	31.5	13	6	93.5	M10		209	0.4

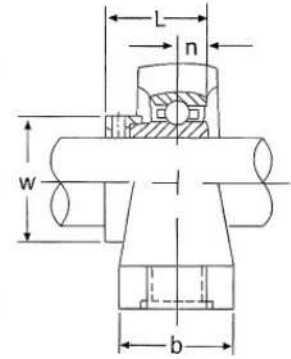
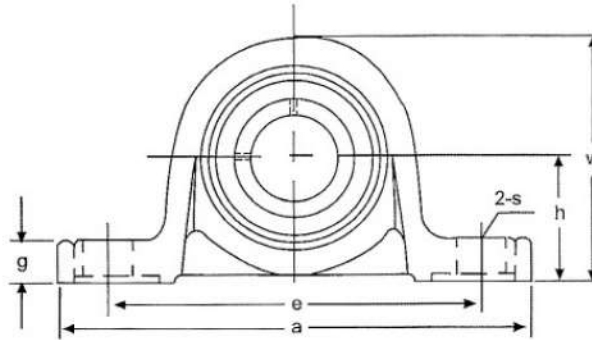
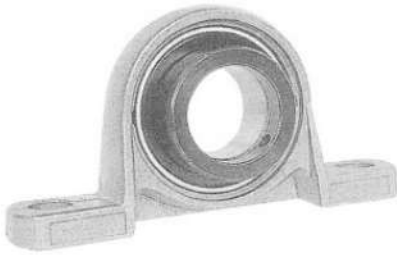


Tipo autoalineante: El inserto del rodamiento está revestido de material no conductor, Revestimiento de goma resistente que corrige desalineaciones de hasta 2°. reduciendo el ruido y la vibración. Las carcasas son de acero prensado y laminado en frío, con acabado enchapado en acero inoxidable; el montaje de base es de dos piezas y el montaje de brida es una sola pieza.

Self-Aligning Type: Bearing insert is encased in nonconductive, oil-resistant rubber liner which corrects misalignment up to 2° While reducing noise and vibration. Housings are pressed cold-rolled steel with rust-proof plated finish; base mount is two-piece and flange mount is one piece.

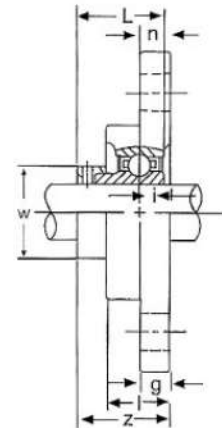
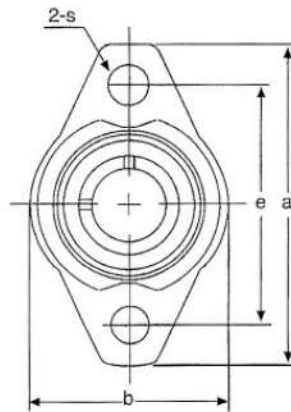
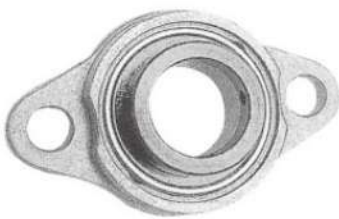


Soporte Tipo Puente de Aleación de Zinc Zinc Alloy Pillow Blocks



UP000 Series Pillow Blocks Extra Narrow Width · Eccentric couar Locking

Tipo Type	Eje Shaft d(mm)	Dimensiones Dimensions (mm)										Tamaño Perno Bolt Size mm	Rodamiento Bearing N°	Soporte Housing N°	Peso Weight kg
		h	a	e	b	s	g	W	L	n	w				
UP000	10	18	67	53	16	7	6	35	17.5	4	17	M6	U000	P000	0.08
UP001	12	19	71	56	16	7	6	38	17.5	4	19	M6	U001	P001	0.10
UP002	15	22	80	63	16	7	7	43	18.5	4.5	22	M6	U002	P002	0.14
UP003	17	24	85	67	18	7	7	47	20.5	5	25	M6	U003	P003	0.17
UP004	20	28	100	80	20	10	9	55	24.5	6	30	M8	U004	P04-5	0.26
UP005	25	32	112	90	20	10	10	62	25.5	6	36	M8	U005	P05-6	0.33
UP006	30	36	132	106	26	13	11	70	26.5	6.5	42	M10	U006	P06-7	0.50

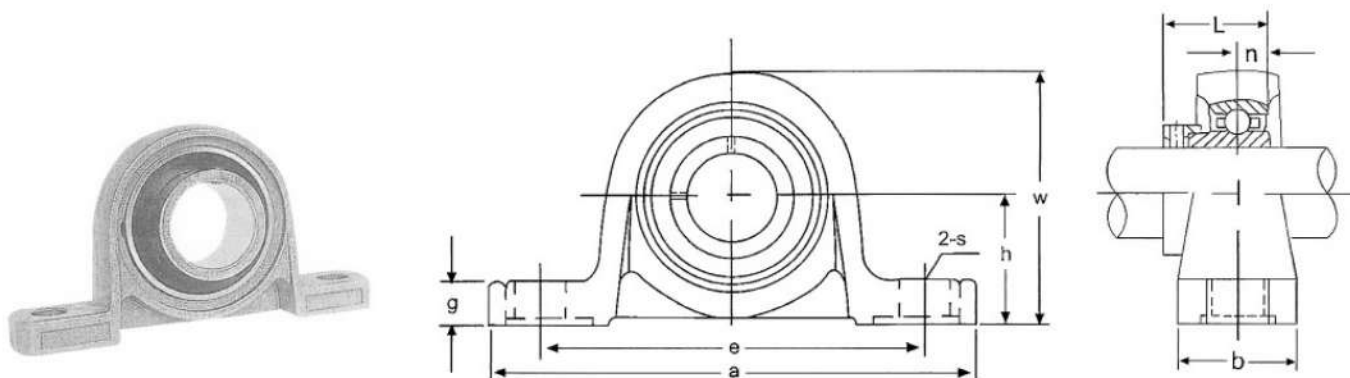


UFL000 Series Two-bolt Flange Units Extra Narrow Width · Eccentric couar Locking

Tipo Type	Eje Shaft d(mm)	Dimensiones Dimensions (mm)										Tamaño Perno Bolt Size mm	Rodamiento Bearing N°	Soporte Housing N°	Peso Weight kg	
		a	e	i	g	l	s	b	Z	L	n					w
UFL000	10	60	45	5.5	5.5	11.5	7	36	19	17.5	4	17	M6	U000	FL000	0.07
UFL001	12	63	48	5.5	5.5	11.5	7	38	19	17.5	4	19	M6	U001	FL001	0.08
UFL002	15	67	53	6.5	5.5	13	7	42	20.5	18.5	4.5	22	M6	U002	FL002	0.11
UFL003	17	71	56	7	7	14	7	46	22.5	20.5	5	25	M6	U003	FL003	0.14
UFL004	20	90	71	8	8	16	10	55	26.5	24.5	6	30	M8	U004	FL04-5	0.23
UFL005	25	95	75	8	8	16	10	60	27.5	25.5	6	36	M8	U005	FL05-6	0.27
UFL006	30	112	85	9	9	18	13	70	29	26.5	6.5	42	M10	U006	FL06-7	0.39
UFL007	35	122	95	10	10	20	13	80	32.5	29.5	7	48	M10	U006	FL07-8	0.50

Soporte Tipo Puente de Aleación de Zinc

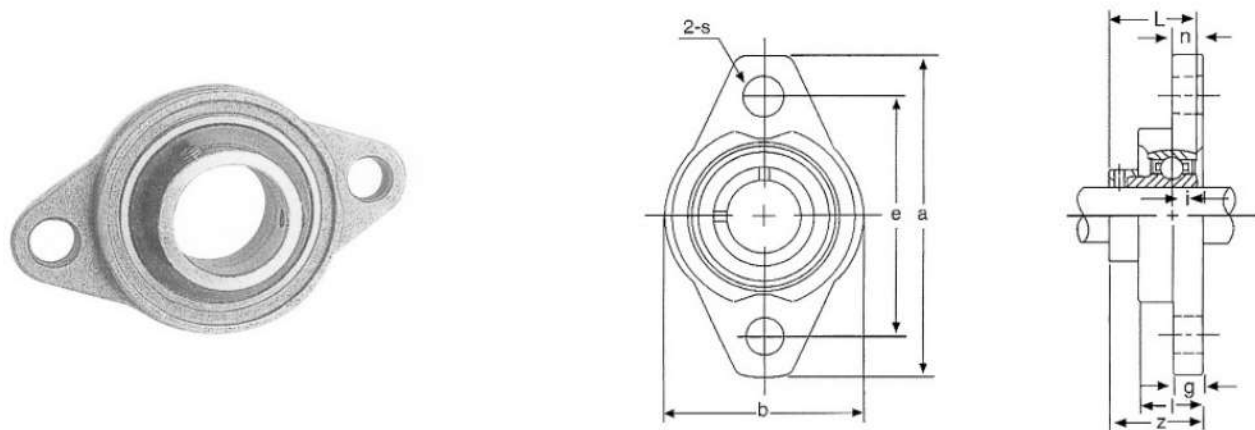
Zinc Alloy Pillow Blocks



KP000 Series Pillow Blocks

Extra Narrow Width · Set Screw Locking

Tipo Type	Eje Shaft d(mm)	Dimensiones Dimensions (mm)									Tamaño Perno Bolt Size mm	Rodamiento Bearing No	Soporte Housing No	Peso Weight kg
		h	a	e	b	s	g	W	Bi	n				
KP000	10	18	67	53	16	7	6	35	14	4	M6	K000	P000	0.08
KP001	12	19	71	56	16	7	6	38	14.5	4	M6	K001	P001	0.10
KP002	15	22	80	63	16	7	7	43	16.5	4.5	M6	K002	P002	0.14
KP003	17	24	85	67	18	7	7	47	17.5	5	M6	K003	P003	0.17
KP004	20	28	100	80	20	10	9	55	21	6	M8	K004	P04-5	0.25
KP005	25	32	112	90	20	10	10	62	22.5	6	M8	K005	P05-6	0.33
KP006	30	36	132	106	26	13	11	70	24.5	6.5	M10	K006	P06-7	0.50



KFL000 Series Two-bolt Flange Units

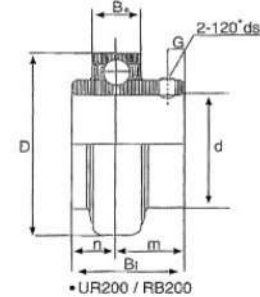
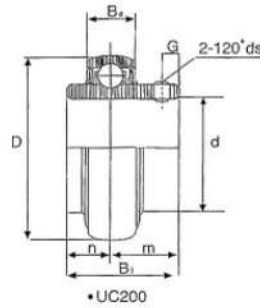
Extra Narrow Width · Set Screw Locking

Tipo Type	Eje Shaft d(mm)	Dimensiones Dimensions (mm)										Tamaño Perno Bolt Size mm	Rodamiento Bearing No	Soporte Housing No	Peso Weight kg
		a	e	i	g	l	s	b	Z	L	n				
KFL000	10	60	45	5.5	5.5	11.5	7	36	15.5	14	4	M6	K000	FL000	0.07
KFL001	12	63	48	5.5	5.5	11.5	7	38	16	14.5	4	M6	K001	FL001	0.08
KFL002	15	67	53	6.5	6.5	13	7	42	18.6	16.5	4.5	M6	K002	FL002	0.11
KFL003	17	71	56	7	7	14	7	46	19.5	17.5	5	M6	K003	FL003	0.14
KFL004	20	90	71	8	8	16	10	55	23	21	6	M8	K004	FL04-5	0.23
KFL005	25	95	75	8	8	16	10	60	24.5	22.5	6	M8	K005	FL05-6	0.27
KFL006	30	112	85	9	9	18	13	70	27	24.5	6.5	M10	K006	FL06-7	0.39



Rodamiento de Bolas

Insert Ball Bearing

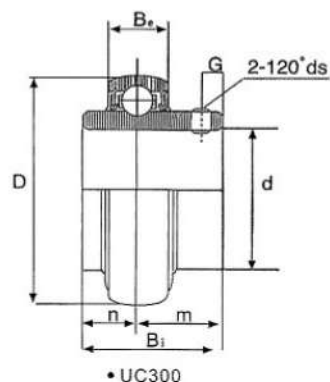


UC200 Series

Rodamiento Bearing N°	Eje-Shaft		Dimensiones Dimensions (mm)							Coeficiente de carga dinámica básica Basic dynamic Load ratings (kN)	Coeficiente de carga estática básica Basic static Load ratings (kN)	Peso Weight kg	
	d		D	Bi	Be	n	m	G	ds				
	(in.)	(mm)							(mm)				(in.UNF)
UCW201 UCW201-8	1/2	12	40	27.4	14	11.5	15.9	4.5	M5x0.8	1/4-28	7.36	4.79	0.12
UCW202 UCW202-9 UCW202-10	9/16 5/8	15	40	27.4	14	11.5	15.9	4.5	M5x0.8	1/4-28 1/4-28	7.36	4.79	0.11
UCW203 UCW203-11	11/16	17	40	27.4	14	11.5	15.9	4.5	M5x0.8	1/4-28	7.36	4.79	0.10
UC201 UC201-8	1/2	12	47	31	17	12.7	18.3	5	M6x1	1/4-28	9.88	6.65	0.21
UC202 UC202-9 UC202-10	9/16 5/8	15	47	31	17	12.7	18.3	5	M6x1	1/4-28 1/4-28	9.88	6.65	0.19
UC203 UC203-11	11/16	17	47	31	17	12.7	18.3	5	M6x1	1/4-28	9.88	6.65	0.19
UC204 204-12	3/4	20	47	31	17	12.7	18.3	5	M6x1	1/4-28	9.88	6.65	0.17 0.18
UC205 205-14 205-15 205-16	7/8 15/16 1	25	52	34.1	17	14.3	19.8	5	M6x1	1/4-28	7.36 10.78	4.79 9.93	0.19 0.22 0.20 0.19
UC206 206-17 206-18 206-19 206-20	1-11/16 1-1/8 1-3/16 1-1/4	30	62	38.1	19	15.9	22.2	5	M6x1	1/4-28	14.97	11.31	0.31 0.34 0.32 0.30
UC207 UC207-20 207-21 207-22 207-23	1-1/4 15/16 1-3/8 1-7/16	35	72	42.9	20	17.5	25.4	7	M8x1	5/16-24	19.75	15.30	0.46 0.52 0.48 0.46
UC208 208-24 208-25	1-1/2 1-9/16	40	80	49.2	21	19.0	30.2	8	M8x1	5/16-24	25.09	19.84	0.63 0.68 0.64
UC209 209-26 209-27 209-28	1-5/8 1-11/16 1-3/4	45	85	49.2	22	19.0	30.2	8	M8x1	5/16-24	25.14	20.46	0.68 0.78 0.74 0.70
UC210 210-30 210-31	1-7/8 1-15/16	50	90	51.6	24	19.0	32.6	10	M10x1.25	3/8-24	26.98	23.18	0.78 0.85 0.80
UC211 211-32 211-34 211-35	2 2-1/8 2-3/16	55	100	55.6	25	22.2	33.4	10	M10x1.25	3/8-24	33.37	29.22	1.07 1.22 1.10 1.05
UC212 212-36 212-38 212-39	2-1/4 2-3/8 2-7/16	60	110	65.1	27	25.4	39.7	10	M10x1.25	3/8-24	36.74	32.93	1.51 1.65 1.42
UC213 213-39 213-40	2-7/16 2-1/2	65	120	65.1	29	25.4	39.7	10	M10x1.25	3/8-24	44.01	40	1.86 1.96 1.94
UC214 214-43 214-44	2-11/16 2-3/4	70	125	74.6	30	30.2	44.4	12	M12x1.25	7/16-20	46.79	45.03	2.05 2.04 2.06
UC215 215-47 215-48	2-15/16 3	75	130	77.8	30	33.3	44.5	12	M12x1.25	7/16-20	50.85	49.30	2.21 2.30 2.13
UC216		80	140	82.6	33	33.3	49.3	12	M12x1.25	7/16-20	55.04	53.31	2.79
UC217 217-52	3-1/4	85	150	85.7	35	34.1	51.6	12	M12x1.5	7/16-20	63.98	63.89	3.38 3.59
UC218 218-56	3-1/2	90	160	96	37	39.7	56.3	12	M12x1.5	1/2-20	73.83	70.76	4.46 4.56

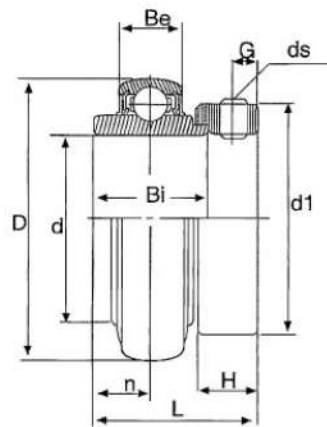
Rodamiento Inserto de Bolas

Insert Ball Bearing

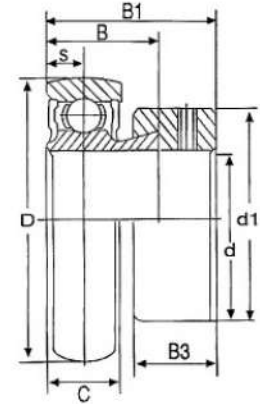


UC300 Series

Rodamiento Bearing Nº	Eje-Shaft		Dimensiones Dimensions (mm)							Coeficiente de carga Basic Load ratings (Kg)		Peso Weight kg
	d		D	Bi	Be	n	m	G	ds	Dinámica Dynamic (C)	Estática Static (C _s)	
	(in.)	(mm)										
UC305-14 305-15 305 305-16	7/8 15/16 1	25	62	38	21	15	23	6	M6X0.75	2170	1090	0.44
UC306-18 306 306-19	1-1/8 1-3/16	30	72	43	23	17	26	6	M6X0.75	2730	1420	0.56
UC307-20 307-21 307-22 307	1-1/4 1-5/16 1-3/8 307	35	80	48	25	19	29	8	M8X1	3400	1820	0.71
UC308-24 308-25 308	1-1/2 1-9/16	40	90	52	27	19	33	10	M10X1.25	4150	2270	1.00
UC309-26 309-27 309-28 309	1-5/8 1-11/16 1-3/4	45	100	57	30	22	35	10	M10X1.25	5250	3050	1.28
UC310-30 310-31 310	1-7/8 1-15/16	50	110	61	32	22	39	12	M12X1.5	6300	3650	1.65
UC311-32 311-34 311 311-35	2 2-1/8 2-3/16	55	120	66	34	25	41	12	M12X1.5	7300	4250	2.07
UC312-36 312 312-38 312-39	2-1/4 2-3/8 2-7/16	60	130	71	36	26	45	12	M12X1.5	8300	4900	2.59
UC313-40 313	2-1/2	65	140	75	38	30	45	12	M12X1.5	9450	5650	3.15
UC314-44 314	2-3/4	70	150	78	40	33	45	12	M12X1.5	10600	6450	3.83
UC315 315-48	3	75	160	82	42	32	50	14	M14X1.5	11600	7200	4.59
UC316		80	170	86	44	34	52	14	M14X1.5	12500	8150	5.40
UC317-52 317	3-1/4	85	180	96	46	40	56	16	M16X1.5	13500	9100	6.58
UC318-56 318	3-1/2	90	190	96	48	40	56	16	M16X1.5	14600	10100	7.34
UC319 319-60	3-3/4	95	200	103	50	41	62	16	M16X1.5	15600	11100	8.70
UC320 320-64	4	100	215	108	54	42	66	18	M18X1.5	17700	13300	10.80
UC321		105	225	112	56	44	68	18	M18X1.5	18700	14500	12.20
UC322		110	240	117	60	46	71	18	M18X1.5	20900	17000	14.30
UC324		120	260	126	64	51	75	18	M18X1.5	21100	17000	18.50
UC326		130	280	135	68	54	81	20	M20X1.5	23400	19600	23.00
UC328		140	300	145	73	59	86	20	M20X1.5	26000	22400	28.50



•NA200 UEL200



•SA200

NA200 Series

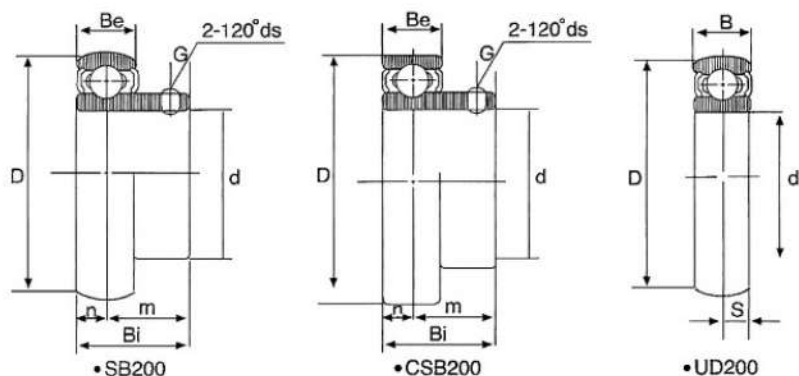
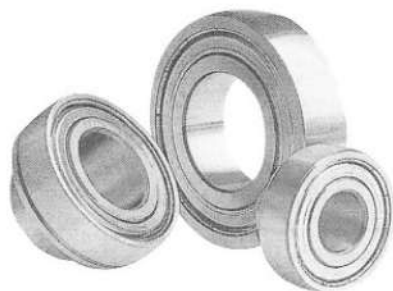
Rodamiento Bearing N ^o	Eje-Shaft		Dimensiones Dimensions (mm)								Coeficiente de carga dinámica básica Basic dynamic Load ratings (kN)	Coeficiente de carga estática básica Basic static Load ratings (kN)	Peso Weight kg
	d (in.)	d (mm)	D	Be	L	Bi	n	d1	H	G			
NA204	20	47	17	43.6	34.2	17.1	33.3	13.5	5	M6X1	9.88	6.65	0.21
NA205	25	52	17	44.4	34.0	17.5	38.1	13.5	5	M6X1	10.78	9.93	0.25
NA206	30	62	19	48.4	36.6	18.3	44.5	15.9	5	M6X1	14.97	11.31	0.39
NA207	35	72	20	51.2	37.6	18.8	55.0	17.5	6.5	M8X1	19.75	15.30	0.60
NA208	40	80	21	56.4	42.8	21.4	60.3	18.3	6.5	M8X1	25.09	19.84	0.77
NA209	45	85	22	56.4	42.8	21.4	63.5	18.3	6.50	M8X1	25.14	20.46	0.84
NA210	50	90	24	62.7	49.2	24.6	69.9	18.3	6.50	M8X1	26.98	23.18	1.02
NA211	55	100	25	71.4	55.6	27.80	76.2	20.7	8.00	M10X1.25	33.37	29.22	1.37
NA212	60	110	27	77.8	61.2	31.00	84.1	22.3	8.00	M10X1.25	36.74	32.93	1.85

SA200, CSA200 Series

Rodamiento Bearing N ^o	Eje-Shaft		Dimensiones Dimensions (mm)							Anillo Excéntrico Eccentric Ring	Coeficiente de carga dinámica básica Basic dynamic Load ratings (kN)	Coeficiente de carga estática básica Basic static Load ratings (kN)	Peso Weight kg
	d (in.)	d (mm)	D	B	B1	S	C	B3	d1				
SA203 CSA203-11	11/16	17	40	19.10	28.6	7	14	13.5	28.6	A203 203-11	7.35	4.78	0.13
SA204-12 CSA204	3/4	20	47	20	29.6	7	14	13.5	33.3	A204-12 204	9.88	6.65	0.15
SA205-14 CSA205-15 SA205 SA205-16	7/8 15/16 1	25	52	21	30.5	7.5	15	13.5	38.1	A205-14 205-15 205 205-16	10.78	7.88	0.22
SA206-18 CSA206 206-19 206-20	1-1/8 1-3/16 1-1/4	30	62	22	33.9	8	16	15.9	44.5	A206-18 206 206-19 206-20	14.97	11.2	0.30
SA207-20 CSA207-21 207-22 207 207-23	1-1/4 1-6/16 1-3/8 1-7/16	35	72	24	37.5	8	18	17.5	55.6	A207-20 207-21 207-22 207 207-23	19.75	15.2	0.50
SA208-24 CSA208-25 208	1-1/2 1-9/16	40	80	27	40.5	9.5	19	18.3	60.3	A208-24 208-25 208	22.8	18.2	0.67

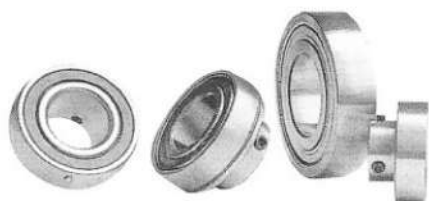
Rodamiento Inserto de Bolas

Insert Ball Bearing



SB200, CSB200 Series

Rodamiento Bearing Nº	Eje-Shaft		Dimensiones Dimensions (mm)								Coeficiente de carga dinámica básica Basic dynamic Load ratings (kN)	Coeficiente de carga estática básica Basic static Load ratings (kN)	Peso Weight kg
	d		D	Bi	Be	n	m	G	ds				
	(in.)	(mm)							(mm)	(in,UNF)			
SB CSB 203		17	40	22	12	6.0	16.0	4.5	M5x0.8		7.36	4.79	0.07
SB CSB 204 204-12	3/4	20	47	25	14	7.0	18.0	5.0	M6x1	1/4-28	9.88	6.65	0.12 0.13
SB CSB 205 205-14 205-15 205-16	7/8 15/16 1	25	52	27	15	7.5	19.5	5.0	M6x1	1/4-28	10.78	9.93	0.16 0.18 0.17 0.16
SB CSB 206 206-18 206-19 206-20	1-1/18 1-3/16 1-1/4	30	62	30	16	8.0	22.0	6.0	M6x1	1/4-28	14.97	11.31	0.25 0.26 0.25 0.24
SB CSB 207 207-20 207-22 207-23	1-1/4 1-3/8 1-7/16	35	72	32	17	8.5	23.5	7.0	M6x1	1/4-28	19.75	15.30	0.38 0.43 0.38 0.37
SB CSB 208 208-24 208-25	1-1/2 1-9/16	40	80	34	18	9.0	25.0	8.0	M8x1	5/16-24	25.09	19.84	0.58 0.60 0.58

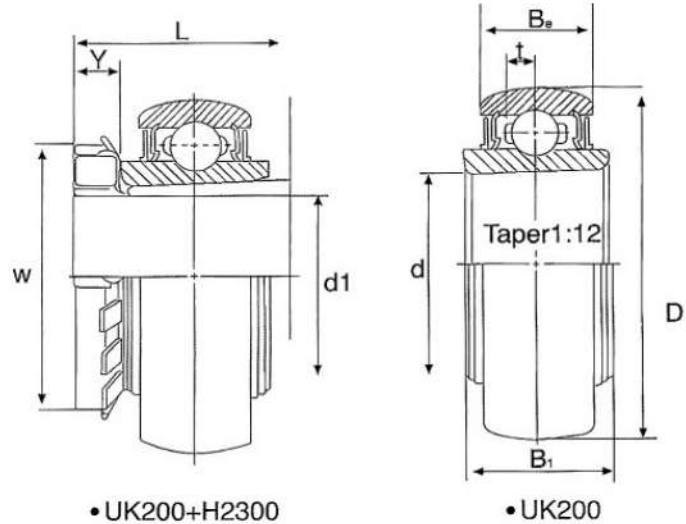
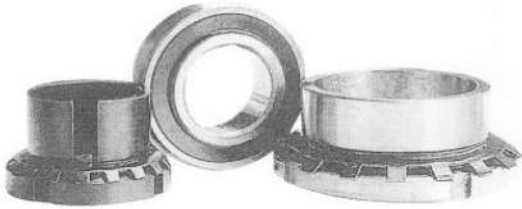


UD200 Series

Rodamiento Bearing Nº	Dimensiones Dimensions (mm)					Coeficiente de carga dinámica básica Basic dynamic Load ratings (kN)	Coeficiente de carga estática básica Basic static Load ratings (kN)	Peso Weight kg
	d	D	B	S	r			
UD203	17	40	12	6.0	1.0	7.36	4.79	0.06
UD204	20	47	14	7.0	1.5	9.88	6.65	0.10
UD205	25	52	15	7.5	1.5	10.78	9.93	0.12
UD206	30	62	16	8.0	1.5	14.97	11.31	0.19
UD207	35	72	17	8.5	2.0	19.75	15.30	0.27
UD208	40	80	18	9.0	2.0	25.09	19.84	0.37
UD209	45	85	19	9.5	2.0	25.14	20.46	0.42
UD210	50	90	20	10.0	2.0	26.98	23.18	0.47

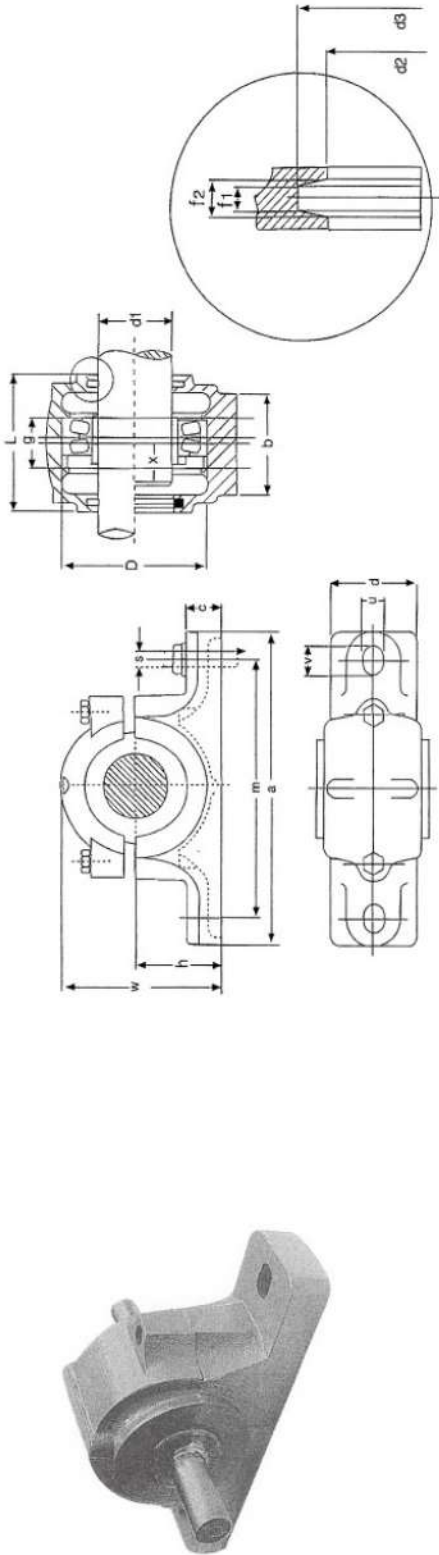


Rodamiento Inserto de Bolas Insert Ball Bearing



UK200+H2300 Series

Rodamiento Bearing Nº	Eje-Shaft		Dimensiones Dimensions (mm)								Coeficiente de carga dinámica básica Basic dynamic Load ratings (kN)	Coeficiente de carga estática básica Basic static Load ratings (kN)	Rodamiento Bearing Nº	Manguito Sleeve Nº	Peso Weight kg
	d		d	D	Be	B1	L	t	r	w					
	(in.)	(mm)													
UK205+H2305 205+HE2305	3/4	20	25	52	17	23	35	4.5	8	38	10.78	9.93	UK205	H2305 HE2305	0.24 0.25
UK206+H2306 206+HA2306 206+HE2306	15/16 1	25	30	62	19	26	38	5.1	8	45	14.97	11.31	UK206	H2306 HA2306 HE2306	0.40 0.41 0.37
UK207+H2307 207+HS2307 207+HA2307	1-1/18 1-3/16	30	35	72	20	28	43	5.8	9	52	19.75	15.30	UK207	H2307 HS2307 HA2307	0.55 0.57 0.55
UK208+H2308 208+HE2308	1-1/14	35	40	80	21	29	46	6.2	10	58	25.09	19.84	UK208	H2308 HE2308	0.72 0.78
UK209+H2309 209+HA2309 209+HE2309	1-7/16 1-1/2	40	45	85	22	30	50	6.5	11	65	25.14	20.46	UK209	H2309 HA2309 HE2309	0.93 0.89 0.95
UK210+H2310 210+HA2310 210+HE2310	1-11/16 1-3/4	45	50	90	22	32	55	6.5	12	70	26.98	23.18	UK210	H2310 HA2310 HE2310	0.80 0.89 0.84
UK211+H2311 211+HS2311 211+HE2311	1-7/8 2	50	55	100	25	36	59	7.3	12	75	33.37	29.22	UK211	H2311 HS2311 HE2311	1.19 1.28 1.17
UK212+H2312 212+HS2312	2-1/8	55	60	110	27	38	62	7.7	13	80	36.74	32.93	UK212	H2312 HS2312	1.52 1.56
UK213+H2313 213+HA2313 213+HE2313	2-3/16 2-1/4	60	65	120	29	40	65	8.3	14	85	44.01	40.0	UK213	H2313 HA2313 HE2313	1.91 2.10 2.04
UK215+H2315 215+HE2315	2-1/2	65	75	130	30	43	73	9.2	15	98	50.85	49.30	UK215	H2315 HE2315	2.56 2.65
UK216+H2316 216+HE2316	2-3/4	70	80	140	33	46	78	9.6	17	105	55.04	53.31	UK216	H2316 HE2316	3.23 3.24
UK217+H2317 217+HE2317	3	75	85	150	35	48	82	10.5	18	110	63.98	63.69	UK217	H2317 HE2317	3.93 3.84
UK218+H2318 218+HS2318	3-1/8	80	90	160	37	50	66	11.1	18	120	73.83	70.76	UK218	H2318 HS2318	4.75 4.80

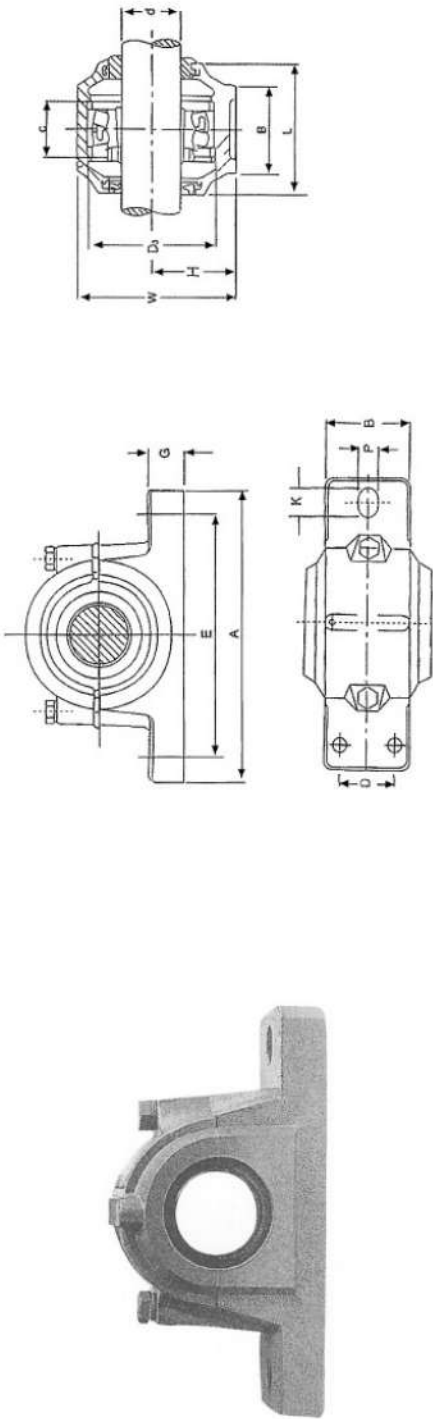


SN600 Series

Soporte Housing No	Eje Shaft		Dimensiones / Dimensions (mm)														Rodamiento Bearing No	Manguito Adapter Adapter Sleeve		Anillo de Localización Locating Ring		Peso Weight kg
	(mm)	(in)	D H ₈	a	b	c	g H ₁₂	h h ₁₂	L	W	m	u	v	s	d ₃ H ₁₂	f ₁ H ₁₂		f ₂	Numero Number	QTY		
SN605	20	3/4	62	185	52	22	34	50	80	90	150	15	20	M12	21.5	31	3	4.2	H305 HE2305	SR62x8.5 SR62x10	2	2.1
SN606	25	1	72	185	52	22	37	50	82	95	150	15	20	M12	26.5	38	4	5.4	H306 HE2306	SR72x9 SR72x10	2	2.8
SN607	30	1 1/8	80	205	60	25	41	60	90	110	170	15	20	M12	31.5	43	4	5.4	H307 HE2307	SR80x10 SR80x10	2	3.5
SN608	35	1 1/4	90	205	60	25	43	60	95	115	170	15	20	M12	36.5	48	4	5.4	H308 HE2308	SR90x10 SR90x10	2	4.2
SN609	40	1 1/2	100	255	70	28	46	70	105	130	210	18	23	M16	41.5	53	4	5.4	H309 HE2309	SR100x10.5 SR100x10	2	5.0
SN610	45	1 3/4	110	255	70	30	50	70	115	135	210	18	23	M16	46.5	58	4	5.4	H310 HE2310	SR110x11.5 SR110x10	2	6.1
SN611	50	2	120	275	80	30	53	80	120	150	230	18	23	M16	51.5	67	5	6.9	H311 HE2311	SR120x12 SR120x10	2	6.5
SN612	55	2 1/8	130	280	80	30	56	80	125	155	230	18	23	M16	56.5	72	5	6.9	H312 HE2312	SR130x12.5 SR130x10	2	7.9
SN613	60	2 1/4	140	315	90	32	58	95	130	175	260	22	27	M20	62	77	5	6.8	H313 HE2313	SR140x12.5 SR140x10	2	10.8
SN615	65	2 1/2	160	345	100	35	65	100	140	195	290	22	27	M20	67	82	5	6.8	H315 HE2315	SR160x14 SR160x10	2	14.6
SN616	70	2 3/4	170	345	100	35	68	112	145	212	290	22	27	M20	72	89	6	8.1	H316 HE2316	SR170x14.5 SR170x10	2	17.1
SN617	75	3	180	380	110	40	70	112	155	218	320	26	32	M24	77	94	6	8.1	H317 HE2317	SR180x14.5 SR180x10	2	18.7
SN618	80	3 1/4	190	400	110	33	74	112	160	230	320	26	35	M24	82	99	6	8.1	H318 HE2318	SR190x15.5 SR190x10	2	24.1
SN619	85	-	200	420	120	36	77	125	170	245	350	26	35	M24	87	104	6	8.1	H319 HE2319	SR200x16 SR200x10	2	25.5
SN620	90	3 1/2	215	420	120	38	83	140	175	280	350	26	35	M24	92	111	7	9.3	H320 HE2320	SR215x18 SR215x10	2	31
SN622	100	4	240	460	130	40	90	150	190	300	390	28	38	M24	102	125	8	10.8	H322 HE2322	SR240x20 SR240x10	2	41.4
SN624	110	4 1/4	260	540	160	50	96	160	205	325	450	33	42	M30	113	135	8	10.7	H2324	SR260x10	1	54.6
SN626	115	4 1/2	280	560	160	50	103	170	215	350	470	33	42	M30	118	140	8	10.7	H2326	SR280x10	1	67.2
SN628	125	5	300	630	170	55	112	180	235	375	520	35	45	M30	128	154	9	12.2	H2328	SR300x10	1	92.6
SN630	135	5 1/4	320	680	180	55	118	190	245	395	560	35	45	M30	138	164	9	12.2	H2330	SR340x10	1	101.5
SN632	140	5 1/2	340	710	190	60	124	200	255	415	580	42	52	M36	143	173	10	13.7	H2332	SR340x10	1	122.3

Carcasa de Bloque de Plomada

Plummer Blocks

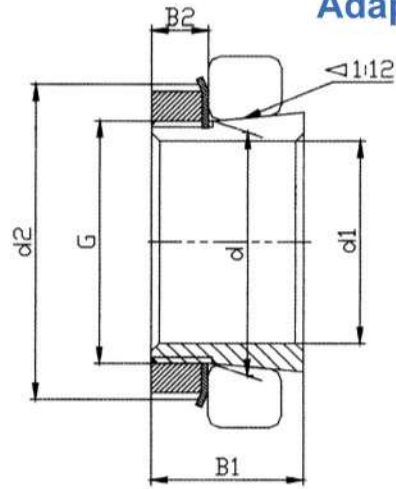


SNU600 Series

SopORTE Housing No	Eje Shaft	Dimensiones / Dimensions (mm)										Peso Weight kg	Rodamiento Bearing NP	Manguito Adaptador Sleeve	Anillo Espaciador Spacer Ring		
		H1/2	D3/4	A	E	B	P	C	L	W	G				K	D	Diámetro del perno Bolt Diameter
SNU605	20	50	62	185	150	52	13	32	77	87	22	20	M10	1305K 2305K	H305 H2305	SR62x7.5 SR62x8	2 1
SNU606	25	50	72	185	150	52	13	32	82	92	22	20	M10	1306K 2306K	H306 H2306	SR72x7.5 SR72x7	2 1
SNU607	30	60	80	205	170	60	15	39	85	106	25	22	M12	1307K 2307K	H307 H2307	SR80x9 SR80x8	2 1
SNU608	35	60	90	205	170	60	15	41	90	112	25	22	M12	1308K 2308K 21309K 22309K	H308 H2308 H308 H2308	SR90x9 SR90x8 SR90x9 SR90x8	2 1 2 1
SNU609	40	70	100	255	210	70	18	44	95	127	28	24	M16	1309K 2309K 21309K 22309K	H309 H2309 H309 H2309	SR100x9.5 SR100x8 SR100x9.5 SR100x8	2 1 2 1
SNU610	45	70	110	255	210	70	18	48	105	133	30	24	M16	1310K 2310K 21310K 22310K	H310 H2310 H310 H2310	SR110x10.5 SR110x8 SR110x10.5 SR110x8	2 1 2 1
SNU611	50	80	120	275	230	80	18	51	110	148	30	24	M16	1311K 2311K 21311K 22311K	H311 H2311 H311 H2311	SR120x11 SR120x8 SR120x11 SR120x8	2 1 2 1
SNU612	55	80	130	280	230	80	18	56	115	154	30	26	M16	1312K 2312K 21312K 22312K	H312 H2312 H312 H2312	SR130x12.5 SR130x10 SR130x12.5 SR130x10	2 1 2 1
SNU613	60	95	140	315	260	90	22	58	120	175	32	30	M20	1313K 2313K 21313K 22313K	H313 H2313 H313 H2313	SR140x12.5 SR140x10 SR140x12.5 SR140x10	2 1 2 1
SNU615	65	100	160	345	290	100	22	65	140	192	35	30	M20	1315K 2315K 21315K 22315K	H315 H2315 H315 H2315	SR160x14 SR160x10 SR160x14 SR160x10	2 1 2 1
SNU616	70	112	170	345	290	100	22	68	145	209	35	30	M20	1316K 2316K 21316K 22316K	H316 H2316 H316 H2316	SR170x14.5 SR170x10 SR170x14.5 SR170x10	2 1 2 1
SNU617	75	112	180	380	320	110	25	70	160	215	40	32	M24	1317K 2317K 21317K 22317K	H317 H2317 H317 H2317	SR180x14.5 SR180x10 SR180x14.5 SR180x10	2 1 2 1
SNU619	85	125	200	410	350	120	25	80	175	239	45	32	M24	2319K	H2319	SR200x13	1
SNU620	90	140	215	410	350	120	25	80	185	271	45	32	M24	2320K	H2320	SR215x13	1



Manguitos de fijación Adapter Sleeves



H200 Series

Manguitos de Fijación Adapter Sleeve	Eje-Shaft d_1				Dimensiones - Dimensions (mm)					Peso Weight kg	Composición - Composition		
	HS in	HA in	HE in	H mm	d	d_2	B_1	B_2	G		Manguito Sleeve	Tuerca de Bloqueo Locknut	Aro de Seguridad Lockwasher
H204				17	20	32	24	7	M20 X 1	0.041	A204	KM4	MB04
H205	7/8	13/16	3/4	20	25	38	26	8	M25 X 1.5	0.07	A205	KM5	MB05
H206	7/8	15/16	1	25	30	45	27	8	M30 X 1.5	0.1	A206	KM6	MB06
H207	1-1/8	1-3/16	1-1/4	30	35	52	29	9	M35 X 1.5	0.13	A207	KM7	MB07
H208	1-3/8	1-5/16	1-1/4	35	40	58	31	10	M40 X 1.5	0.17	A208	KM8	MB08
H209	1-5/8	1-7/16	1-1/2	40	45	65	33	11	M45 X 1.5	0.23	A209	KM9	MB09
H210	1-5/8	1-11/16	1-3/4	45	50	70	35	12	M50 X 1.5	0.27	A210	KM10	MB10
H211	1-7/8	1-15/16	2	50	55	75	37	12	M55 X 2	0.31	A211	KM11	MB11
H212	2-1/8	2-1/16	2-1/4	55	60	80	38	13	M60 X 2	0.35	A212	KM12	MB12
H213	2-3/8	2-3/16	2-1/4	60	65	85	40	14	M65 X 2	0.4	A213	KM13	MB13
H214				60	70	92	41	14	M70 X 2	0.6	A214	KM14	MB14
H215	2-5/8	2-7/16	2-1/2	65	75	98	43	15	M75 X 2	0.71	A215	KM15	MB15
H216	2-7/8	2-11/16	2-3/4	70	80	105	46	17	M80 X 2	0.88	A216	KM16	MB16
H217		2-15/16	3	75	85	110	50	18	M85 X 2	1.02	A217	KM17	MB17
H218	3-1/8	3-3/16	3-1/4	80	90	120	52	18	M90 X 2	1.2	A218	KM18	MB18
H219		3-5/16	3-1/4	85	95	125	55	19	M95 X 2	1.35	A219	KM19	MB19
H220		3-7/16	3-1/2	90	100	130	58	20	M100 X 2	1.5	A220	KM20	MB20
H221				95	105	140	60	20	M105 X 2	1.7	A221	KM21	MB21
H222		3-15/16	4	100	110	145	63	21	M110 X 2	1.9	A222	KM22	MB22
H304				17	20	32	28	7	M20 X 1	0.045	A304	KM4	MB04
H305	7/8	13/16	3/4	20	25	38	29	8	M25 X 1.5	0.075	A305	KM5	MB05
H306	7/8	15/16	1	25	30	45	31	8	M30 X 1.5	0.11	A306	KM6	MB06
H307	1-1/8	1-3/16	1-1/4	30	35	52	35	9	M35 X 1.5	0.14	A307	KM7	MB07
H308	1-3/8	1-5/16	1-1/4	35	40	58	36	10	M40 X 1.5	0.19	A308	KM8	MB08
H309	1-5/8	1-7/16	1-1/2	40	45	65	39	11	M45 X 1.5	0.25	A309	KM9	MB09
H310	1-5/8	1-11/16	1-3/4	45	50	70	42	12	M50 X 1.5	0.3	A310	KM10	MB10
H311	1-7/8	1-15/16	2	50	55	75	45	12	M55 X 2	0.35	A311	KM11	MB11
H312	2-1/8	2-1/16	2-1/4	55	60	80	47	13	M60 X 2	0.39	A312	KM12	MB12
H313	2-3/8	2-3/16	2-1/4	60	65	85	50	14	M65 X 2	0.46	A313	KM13	MB13
H314				60	70	92	52	14	M70 X 2	0.72	A314	KM14	MB14
H315	2-5/8	2-7/16	2-1/2	65	75	98	55	15	M75 X 2	0.83	A315	KM15	MB15
H316	2-7/8	2-11/16	2-3/4	70	80	105	59	17	M80 X 2	1	A316	KM16	MB16
H317		2-15/16	3	75	85	110	63	18	M85 X 2	1.2	A317	KM17	MB17
H318	3-1/8	3-3/16	3-1/4	80	90	120	65	18	M90 X 2	1.35	A318	KM18	MB18
H319		3-5/16	3-1/4	85	95	125	68	19	M95 X 2	1.55	A319	KM19	MB19
H320		3-7/16	3-1/2	90	100	130	71	20	M100 X 2	1.7	A320	KM20	MB20
H321				95	105	140	74	20	M105 X 2	1.95	A321	KM21	MB21
H322		3-15/16	4	100	110	145	77	21	M110 X 2	2.2	A322	KM22	MB22